

NO. A-20228-1

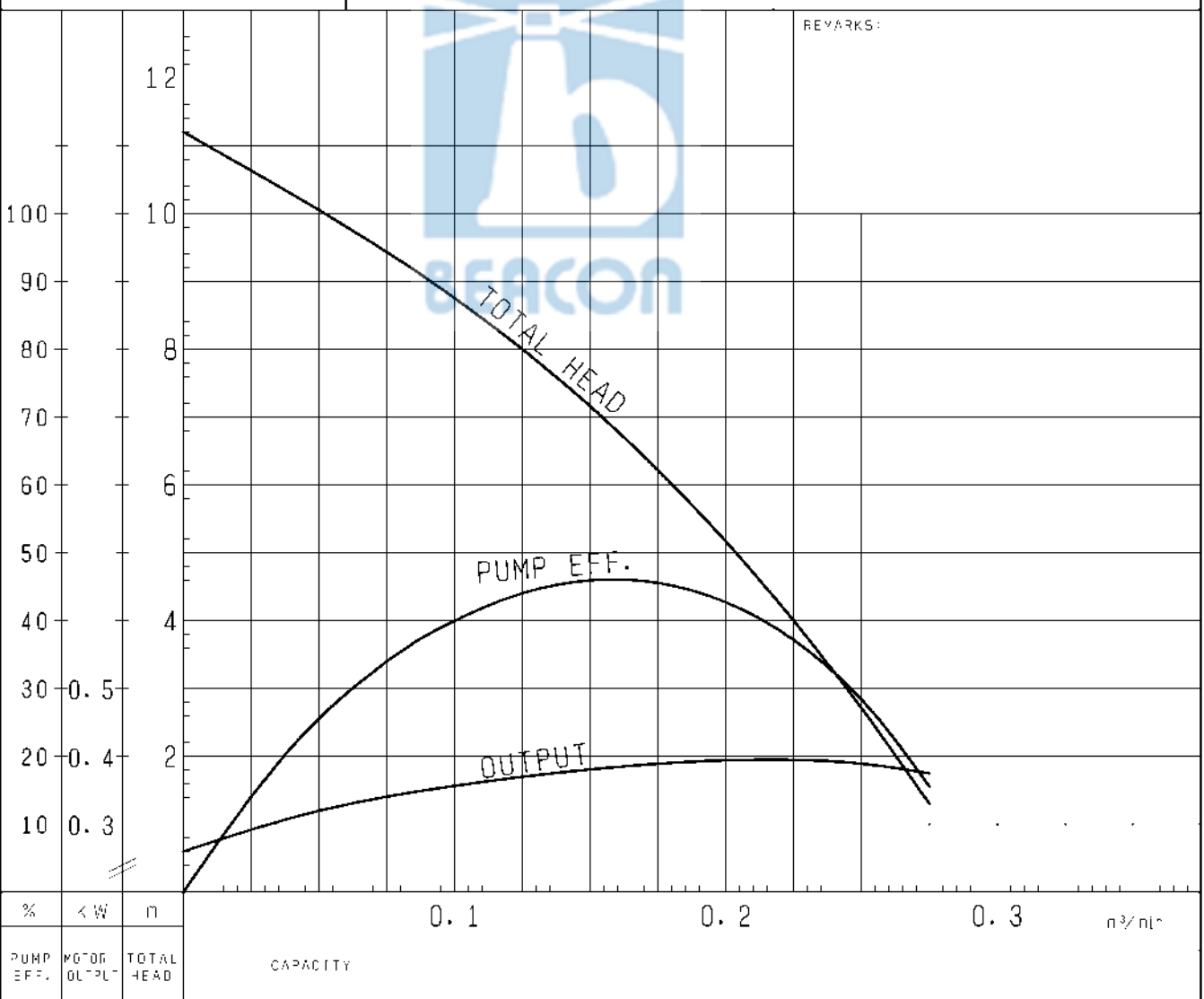
PUMP PERFORMANCE CURVES

TYPE Corrosion Resistant Submersible Stainless Steel Pump	MODEL 50SFQ2.4 -52	FREQUENCY 50 Hz
--	--------------------	-----------------

CUSTOMER'S NAME _____

EQUIPMENT TITLE _____ NO. _____

	STANDARD SPECIFICATIONS	REQUIRED SPECIFICATIONS
DISCHARGE BORE	50 mm	mm
TOTAL HEAD	8 m	m
CAPACITY	0.12 m ³ /min	m ³ /min
MOTOR OUTPUT	0.4 kW	kW
PHASE x VOLTAGE	3 φ x V	φ x V
CURRENT	A	A
POLES / REVOLUTION	2 P / S. S. 3000 min ⁻¹	P / min ⁻¹
STARTING METHOD	DIRECT ON LINE	
INSULATION CLASS	E	

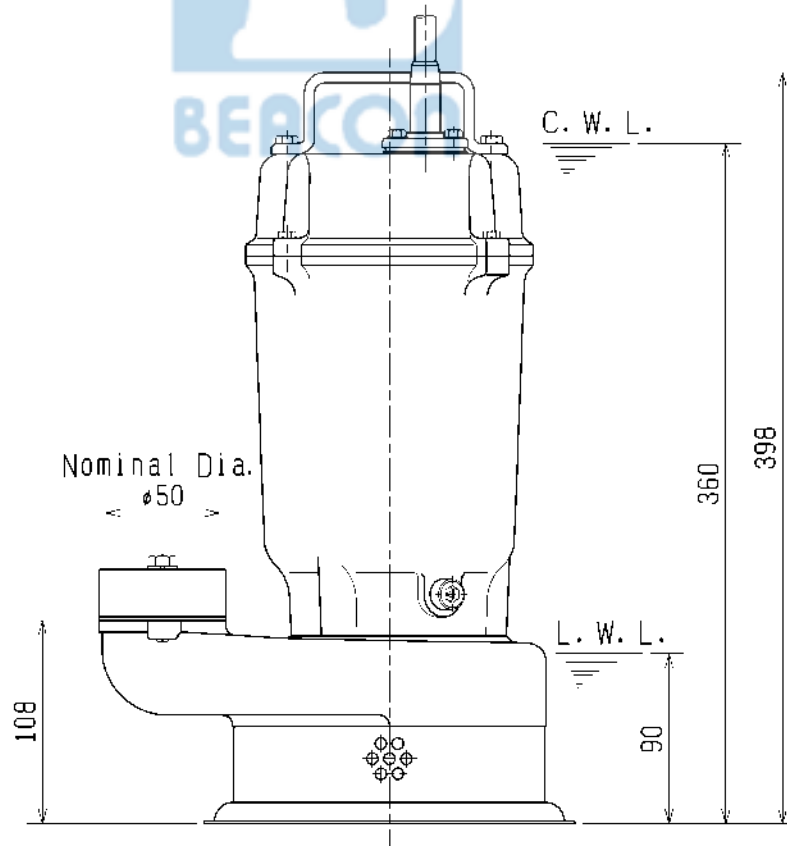
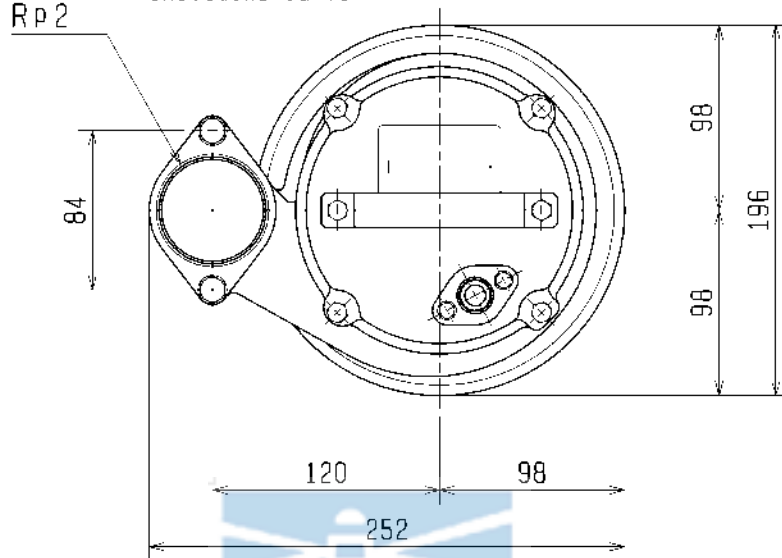


TSURUMI MFG. CO., LTD.

DIMENSION DRAWING		No.	No.	A-20234-1
TYPE	Corrosion Resistant Submersible Stainless Steel Pump	MODEL	50SFQ2.4 -52/62 50SFQ2.75 -52/62	

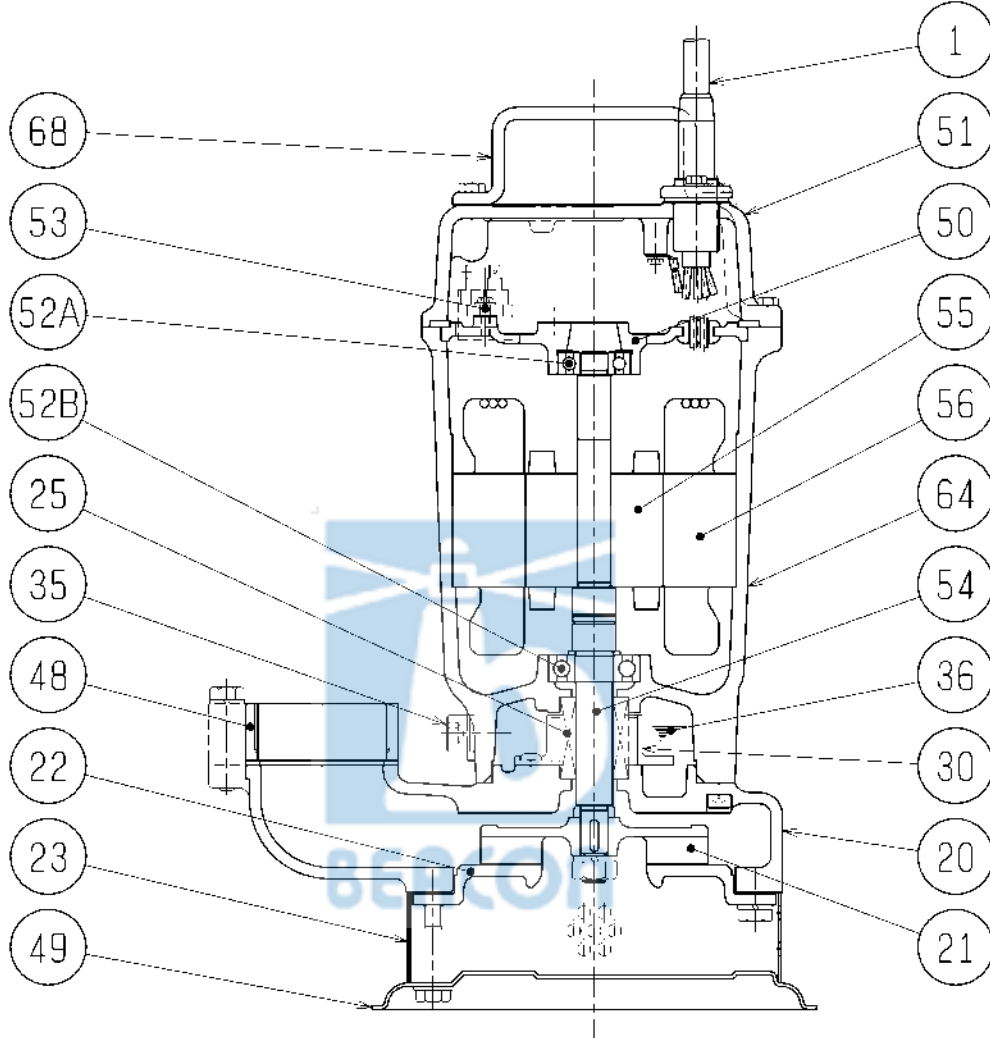
MODEL	Approximate Weight (※)
50SFQ2.4-52/62	20kg
50SFQ2.75-52/62	22kg

※excluding cable



C. W. L. :Continuous running Water Level
L. W. L. :Lowest running Water Level

SECTIONAL DRAWING		No.	No. A-20237-1
TYPE	Corrosion Resistant Submersible Stainless Steel Pump	MODEL	50SFQ2.4 -52/62 50SFQ2.75 -52/62



REQ. SPECIFICATION

No.	DESCRIPTION	QTY	MATERIAL / NOTE	No.	DESCRIPTION	QTY	MATERIAL / NOTE
1	Cable	1	PVC Sheath	51	Head Cover	1	Stainless Steel Casting
20	Pump Casing	1	Stainless Steel Casting	52A	Upper Bearing	1	6201ZZC3
21	Impeller	1	Stainless Steel Casting	52B	Lower Bearing	1	6203ZZC3
22	Suction Cover	1	Stainless Steel Casting	53	Motor Protector	1	
23	Strainer	1	Stainless Steel 316	54	Shaft	1	Stainless Steel 316
25	Mechanical Seal	1	X-16W	55	Rotor	1	
30	Oil Lifter	1	Plastic	56	Stator	1	
35	Oil Plug	1	Stainless Steel 316	64	Motor Frame	1	Stainless Steel Casting
36	Lubricant		Turbine Oil (ISO VG32)	68	Handle	1	Stainless Steel 316
48	Screwed Flange	1	Stainless Steel Casting				
49	Bottom Plate	1	Stainless Steel 316				
50	Motor Bracket	1	Gray Iron Casting				

NO. A-20226-1

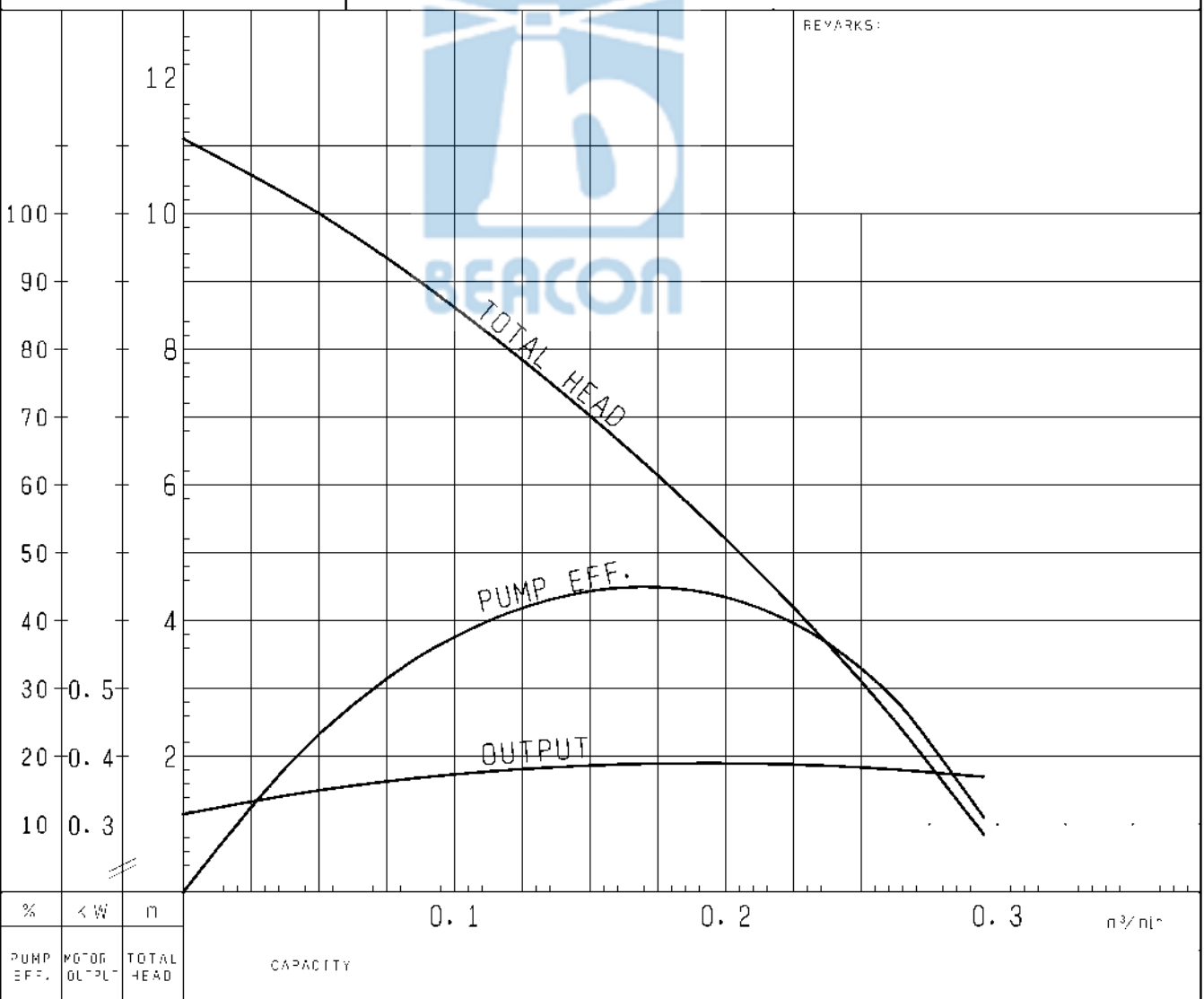
PUMP PERFORMANCE CURVES

TYPE Corrosion Resistant Submersible Stainless Steel Pump	MODEL 50SFQ2.4S -52	FREQUENCY 50 Hz
--	---------------------	-----------------

CUSTOMER'S NAME _____

EQUIPMENT TITLE _____ NO. _____

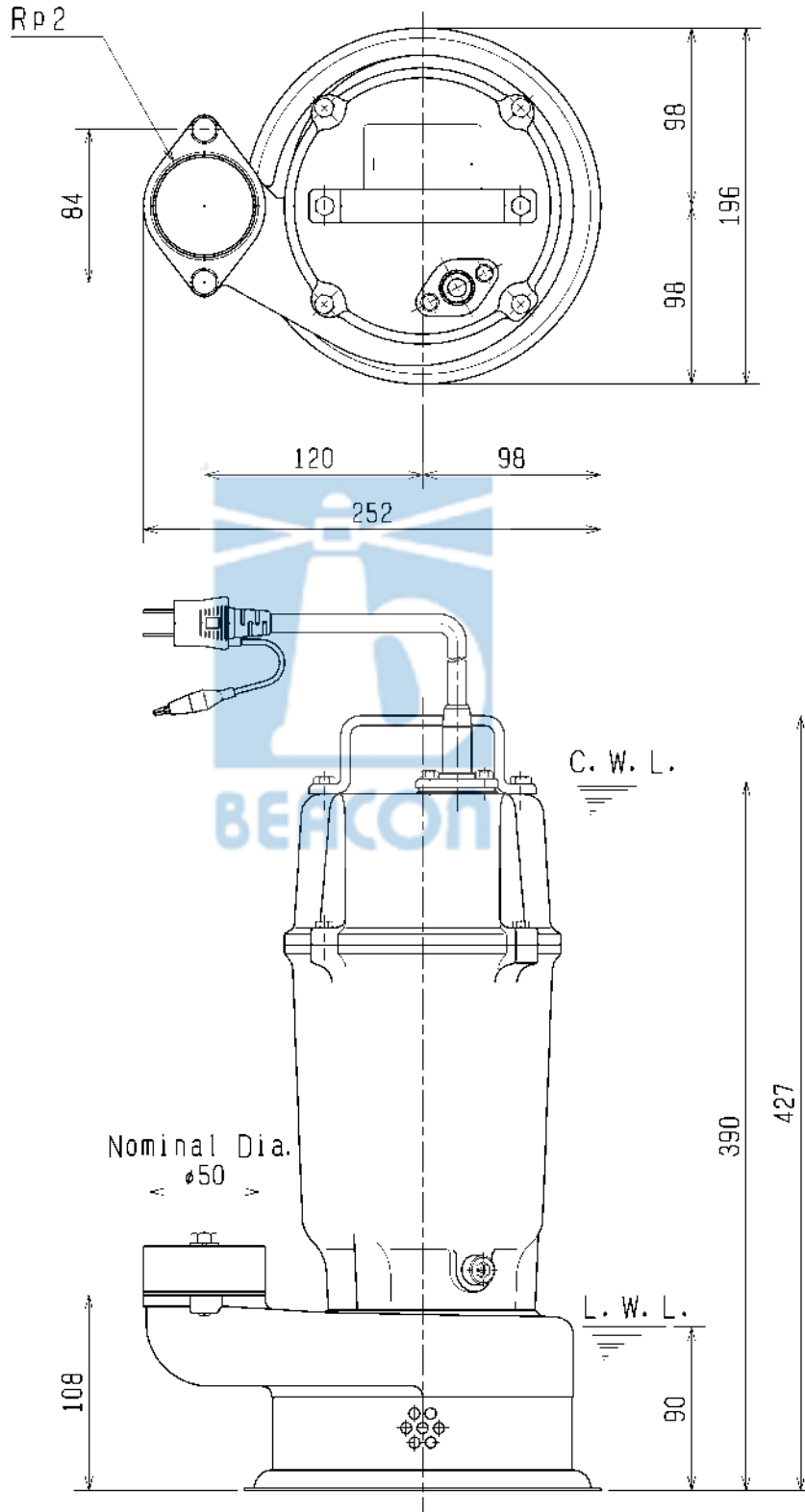
	STANDARD SPECIFICATIONS	REQUIRED SPECIFICATIONS
DISCHARGE BORE	50 mm	mm
TOTAL HEAD	8 m	m
CAPACITY	0.12 m ³ /min	m ³ /min
MOTOR OUTPUT	0.4 kW	kW
PHASE x VOLTAGE	1 φ x V	φ x V
CURRENT	A	A
POLES / REVOLUTION	2 P / S. S. 3000 min ⁻¹	P / min ⁻¹
STARTING METHOD	CAPACITOR START	
INSULATION CLASS	E	



TSURUMI MFG. CO., LTD.

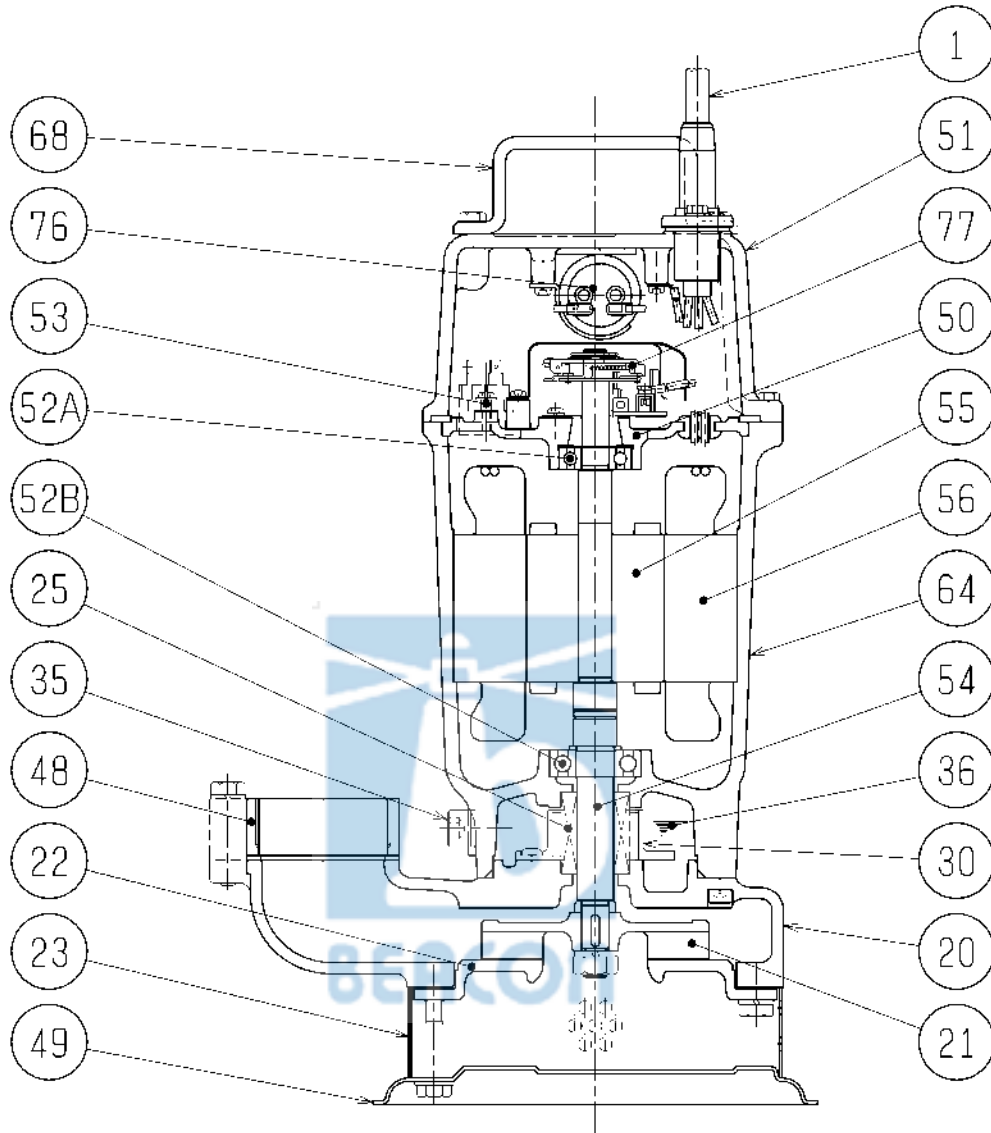
DIMENSION DRAWING		No.	No. A-20233-1
TYPE	Corrosion Resistant Submersible Stainless Steel Pump	MODEL	50SFQ2.4S -52/62

Approximate Weight (※)
21kg
※excluding cable



C. W. L. :Continuous running Water Level
L. W. L. :Lowest running Water Level

SECTIONAL DRAWING		No.	No. A-20236-1
TYPE	Corrosion Resistant Submersible Stainless Steel Pump	MODEL	50SFQ2.4S -52/62



REQ. SPECIFICATION

No.	DESCRIPTION	QTY	MATERIAL / NOTE	No.	DESCRIPTION	QTY	MATERIAL / NOTE
1	Cable	1	PVC Sheath	52A	Upper Bearing	1	6201ZC3
20	Pump Casing	1	Stainless Steel Casting	52B	Lower Bearing	1	6203ZC3
21	Impeller	1	Stainless Steel Casting	53	Motor Protector	1	
22	Suction Cover	1	Stainless Steel Casting	54	Shaft	1	Stainless Steel 316
23	Strainer	1	Stainless Steel 316	55	Rotor	1	
25	Mechanical Seal	1	X-16W	56	Stator	1	
30	Oil Lifter	1	Plastic	64	Motor Frame	1	Stainless Steel Casting
35	Oil Plug	1	Stainless Steel 316	68	Handle	1	Stainless Steel 316
36	Lubricant		Turbine Oil (ISO VG32)	76	Capacitor	1	
48	Screwed Flange	1	Stainless Steel Casting	77	Centrifugal Switch	1	
49	Bottom Plate	1	Stainless Steel 316				
50	Motor Bracket	1	Gray Iron Casting				
51	Head Cover	1	Stainless Steel Casting				

NO. A-20230-1

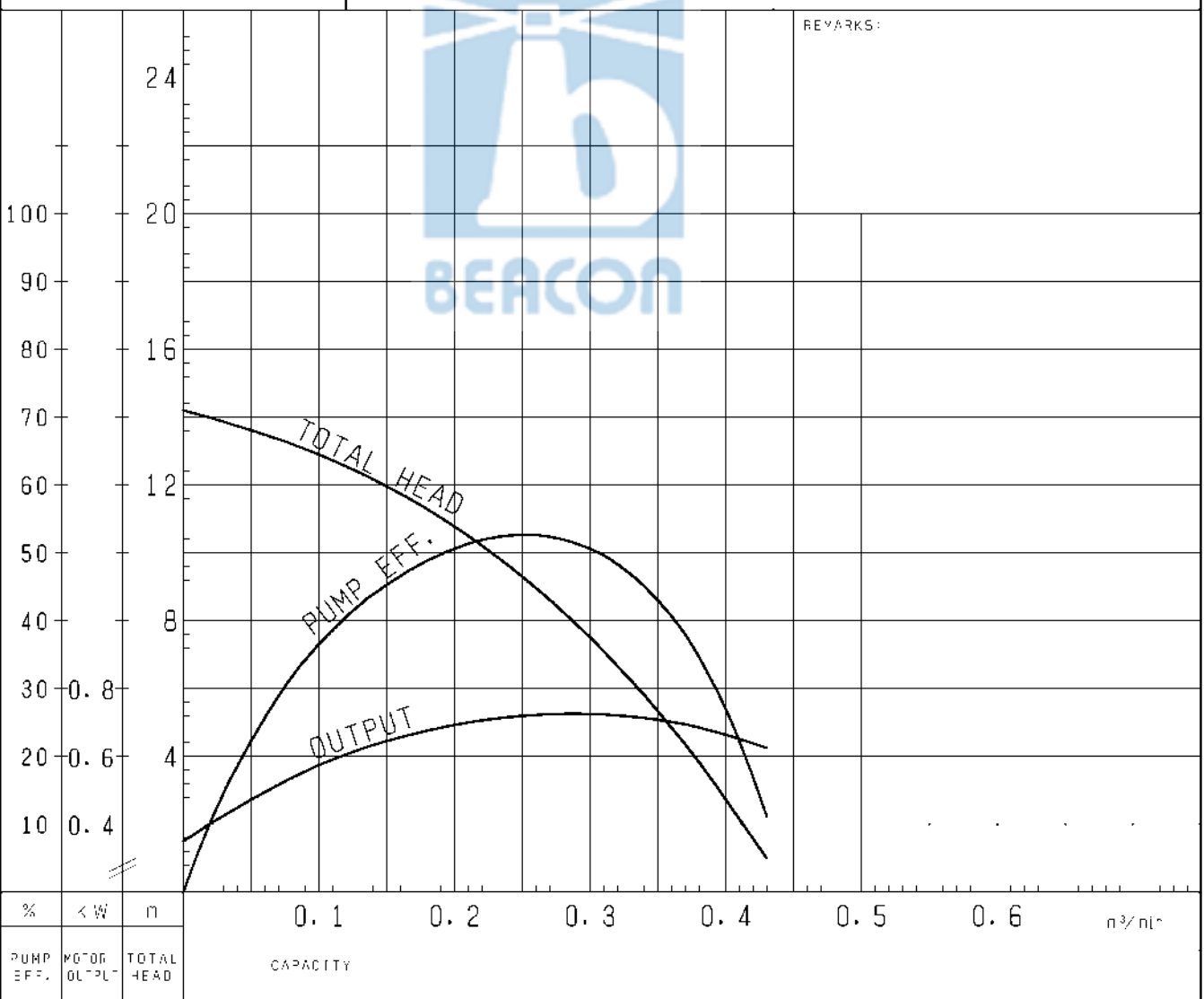
PUMP PERFORMANCE CURVES

TYPE Corrosion Resistant Submersible Stainless Steel Pump	MODEL 50SFQ2.75 -52	FREQUENCY 50 Hz
--	---------------------	-----------------

CUSTOMER'S NAME _____

EQUIPMENT TITLE _____ NO. _____

	STANDARD SPECIFICATIONS	REQUIRED SPECIFICATIONS
DISCHARGE BORE	50 mm	mm
TOTAL HEAD	10 m	m
CAPACITY	0.21 m ³ /min	m ³ /min
MOTOR OUTPUT	0.75 kW	kW
PHASE x VOLTAGE	3 φ x V	φ x V
CURRENT	A	A
POLES / REVOLUTION	2 P / S. S. 3000 min ⁻¹	P / min ⁻¹
STARTING METHOD	DIRECT ON LINE	
INSULATION CLASS	E	

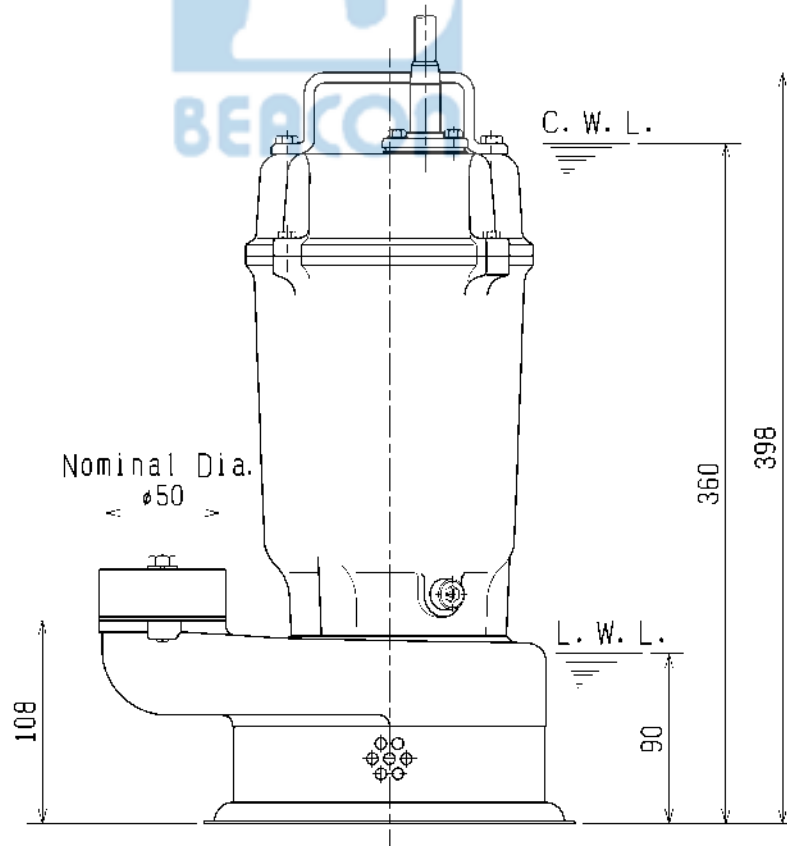
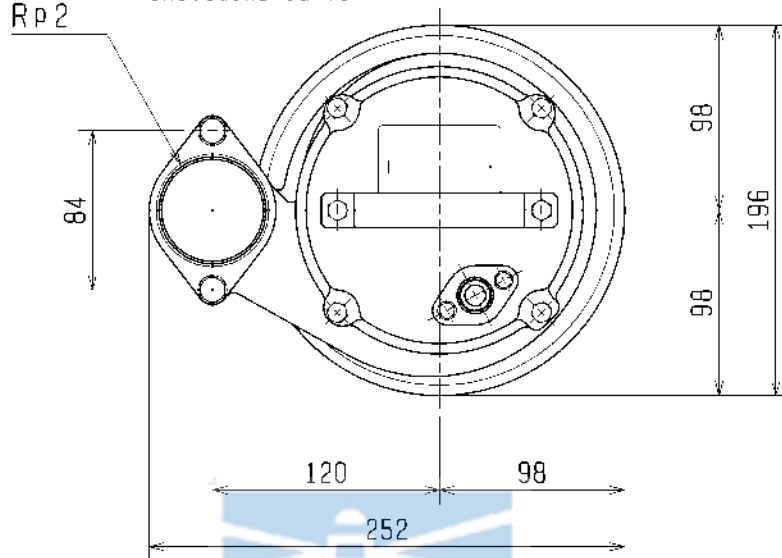


TSURUMI MFG. CO., LTD.

DIMENSION DRAWING		No.	No.	A-20234-1
TYPE	Corrosion Resistant Submersible Stainless Steel Pump	MODEL	50SFQ2.4 -52/62 50SFQ2.75 -52/62	

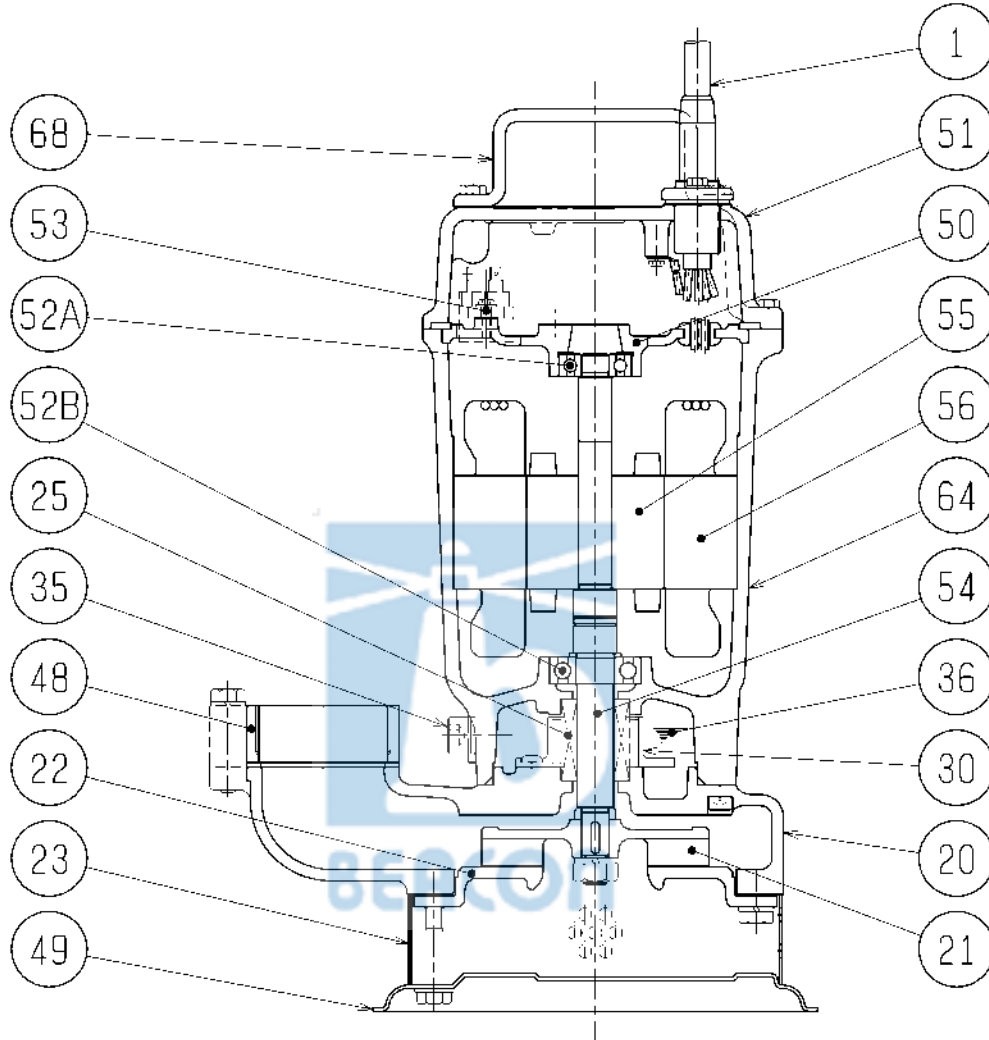
MODEL	Approximate Weight (※)
50SFQ2.4-52/62	20kg
50SFQ2.75-52/62	22kg

※excluding cable



C. W. L. :Continuous running Water Level
L. W. L. :Lowest running Water Level

SECTIONAL DRAWING		No.	No. A-20237-1
TYPE	Corrosion Resistant Submersible Stainless Steel Pump	MODEL	50SFQ2.4 -52/62 50SFQ2.75 -52/62



REQ. SPECIFICATION

No.	DESCRIPTION	QTY	MATERIAL / NOTE	No.	DESCRIPTION	QTY	MATERIAL / NOTE
1	Cable	1	PVC Sheath	51	Head Cover	1	Stainless Steel Casting
20	Pump Casing	1	Stainless Steel Casting	52A	Upper Bearing	1	6201ZZC3
21	Impeller	1	Stainless Steel Casting	52B	Lower Bearing	1	6203ZZC3
22	Suction Cover	1	Stainless Steel Casting	53	Motor Protector	1	
23	Strainer	1	Stainless Steel 316	54	Shaft	1	Stainless Steel 316
25	Mechanical Seal	1	X-16W	55	Rotor	1	
30	Oil Lifter	1	Plastic	56	Stator	1	
35	Oil Plug	1	Stainless Steel 316	64	Motor Frame	1	Stainless Steel Casting
36	Lubricant		Turbine Oil (ISO VG32)	68	Handle	1	Stainless Steel 316
48	Screwed Flange	1	Stainless Steel Casting				
49	Bottom Plate	1	Stainless Steel 316				
50	Motor Bracket	1	Gray Iron Casting				

NO. A-11588-1

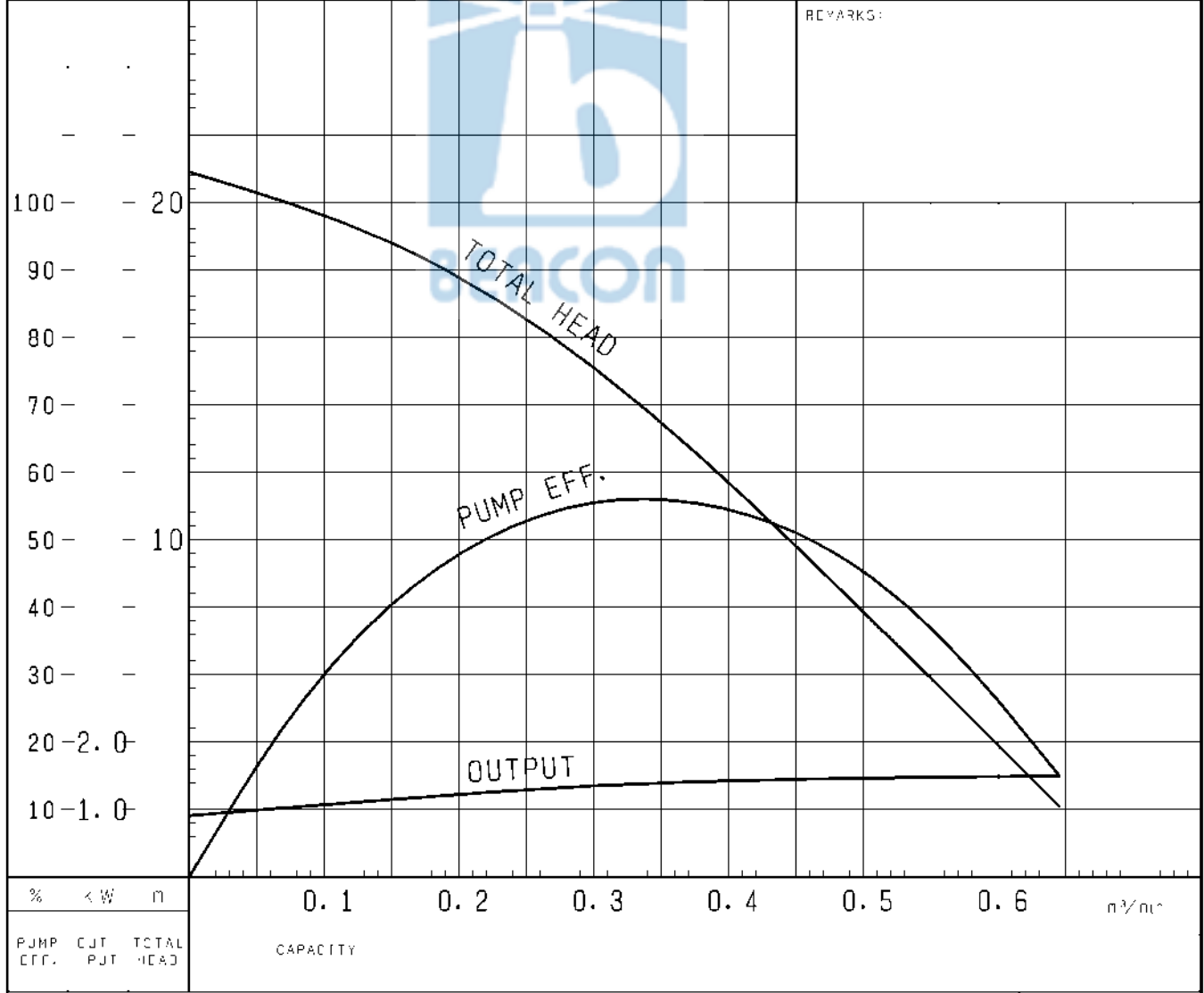
PUMP PERFORMANCE CURVES

TYPE Corrosion Resistant Submersible Stainless Steel Pump	MODEL 80SFQ21.5 -52	FREQUENCY 50 Hz
--	---------------------	-----------------

CUSTOMER'S NAME _____

EQUIPMENT TITLE _____ NO. _____

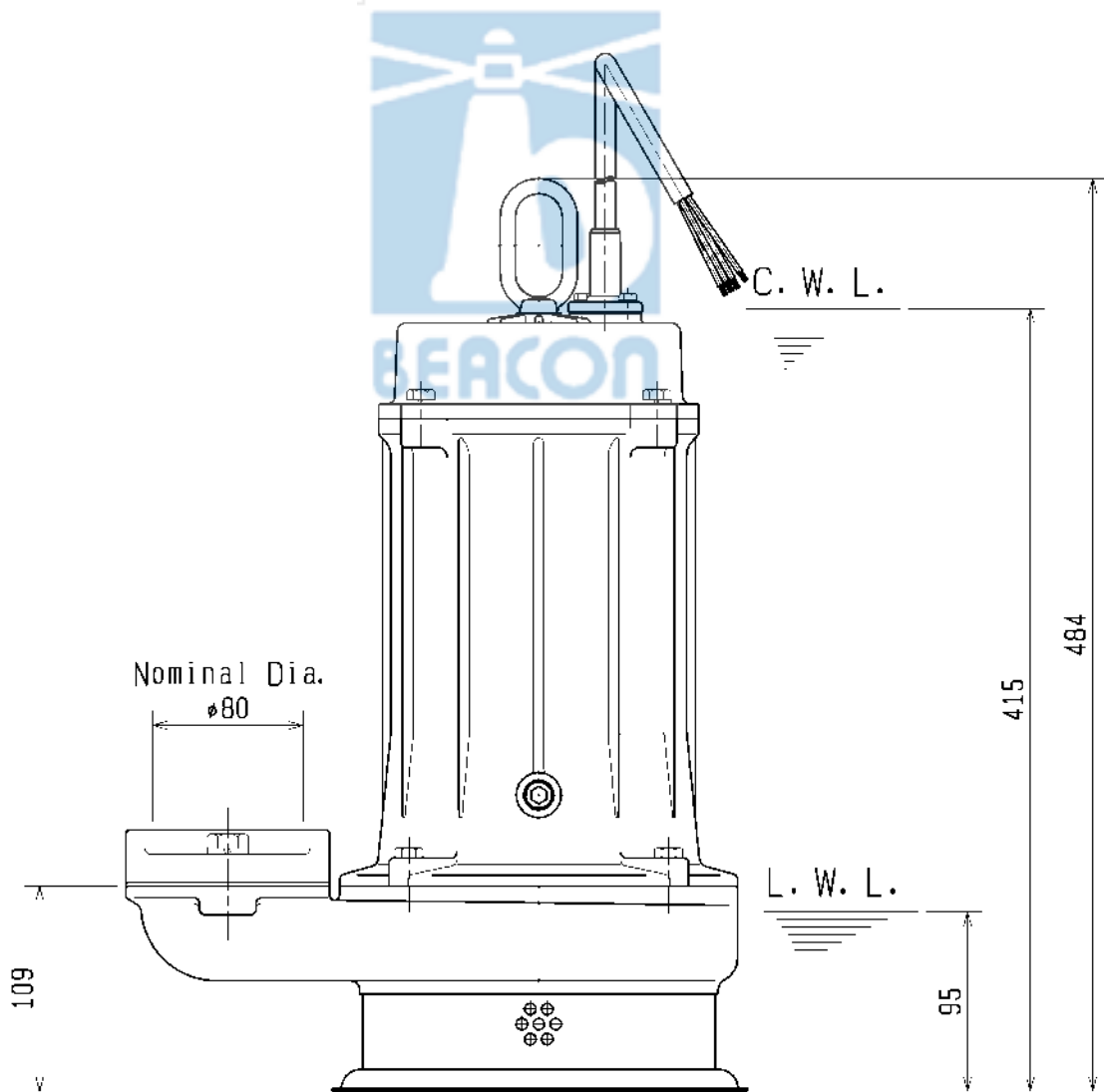
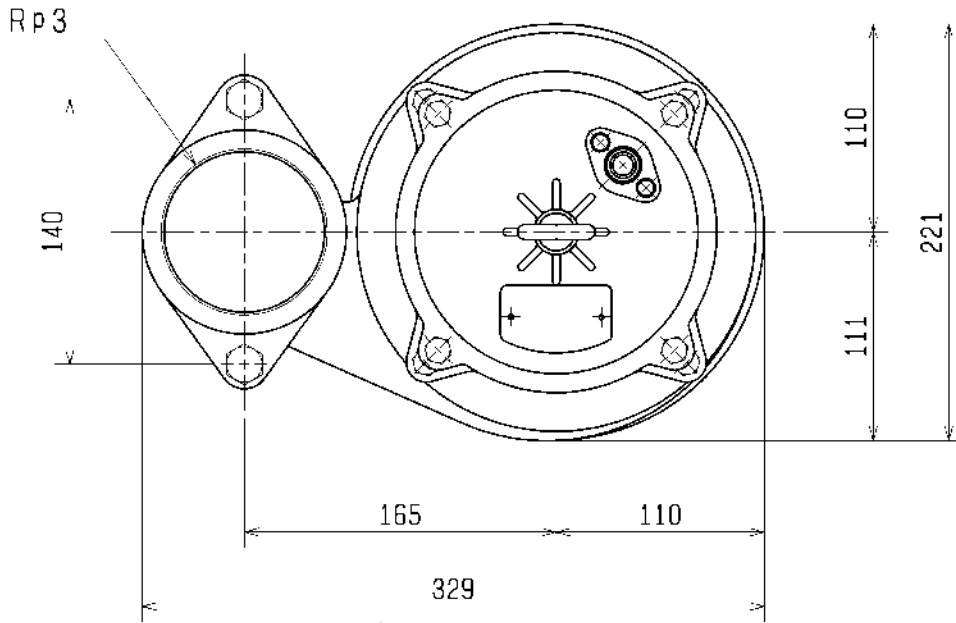
	STANDARD SPECIFICATIONS	REQUIRED SPECIFICATIONS
DISCHARGE BORE	80 mm	mm
TOTAL HEAD	15 m	m
CAPACITY	0.3 m ³ /min	m ³ /min
MOTOR OUTPUT	1.5 kW	kW
PHASE x VOLTAGE	3 ϕ x	ϕ x V
CURRENT	A	A
POLES / REVOLUTION	2 P / s. s. 3000 min ⁻¹	P / min ⁻¹
STARTING METHOD	DIRECT ON LINE	
INSULATION CLASS	F	



TSURUMI MFG. CO., LTD.

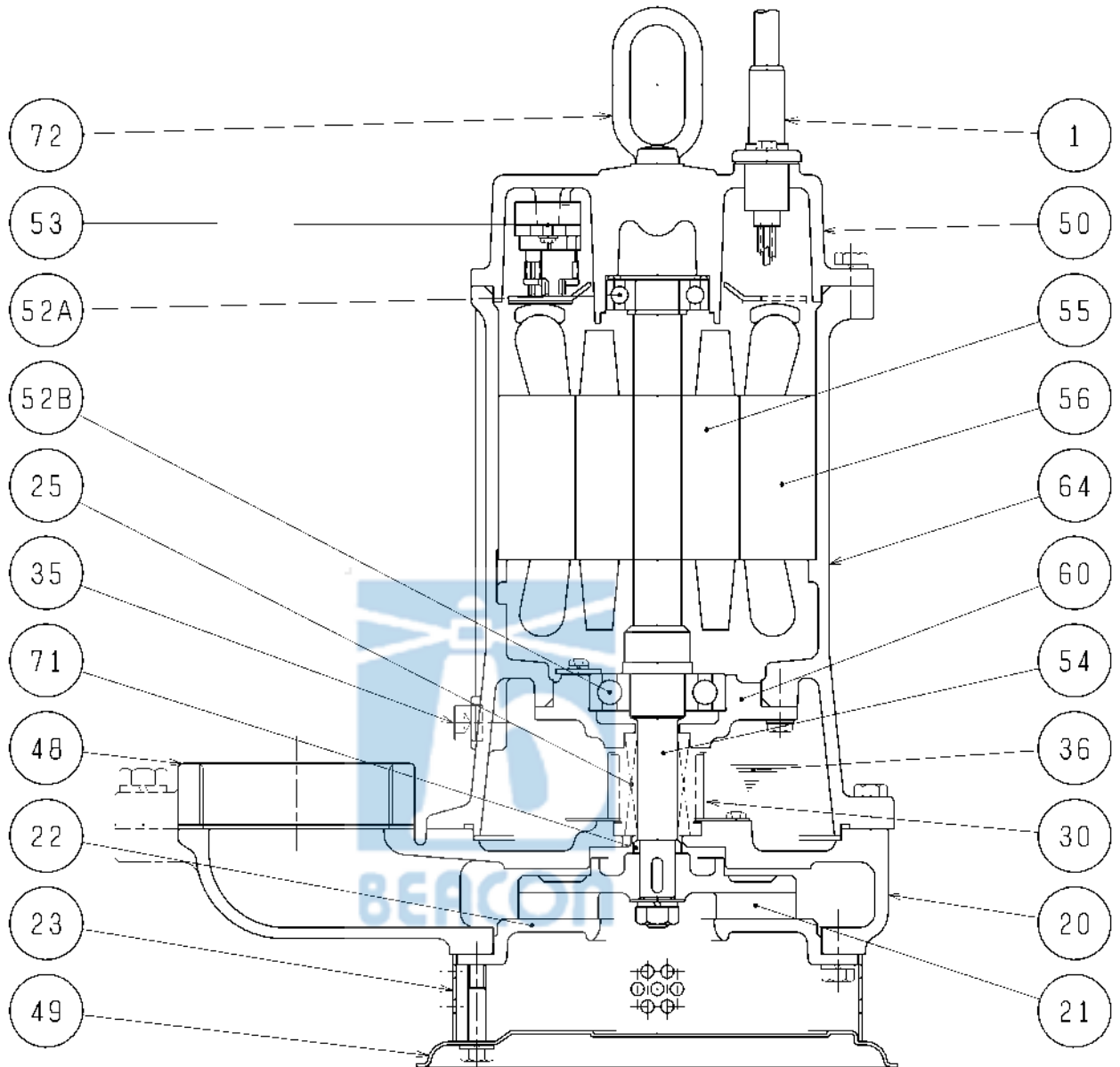
DIMENSION DRAWING		No.	No. A-11596-3
TYPE	Corrosion Resistant Submersible Stainless Steel Pump	MODEL	80SFQ21.5 -52/62

Approximate Weight (※)
36kg
※excluding cable



C. W. L. : Continuous Running Water Level
L. W. L. : Lowest Running Water Level

SECTIONAL DRAWING		No.	No.	A-11599-4
TYPE	Corrosion Resistant Submersible Stainless Steel Pump	MODEL	80SFQ21.5 -52/62	



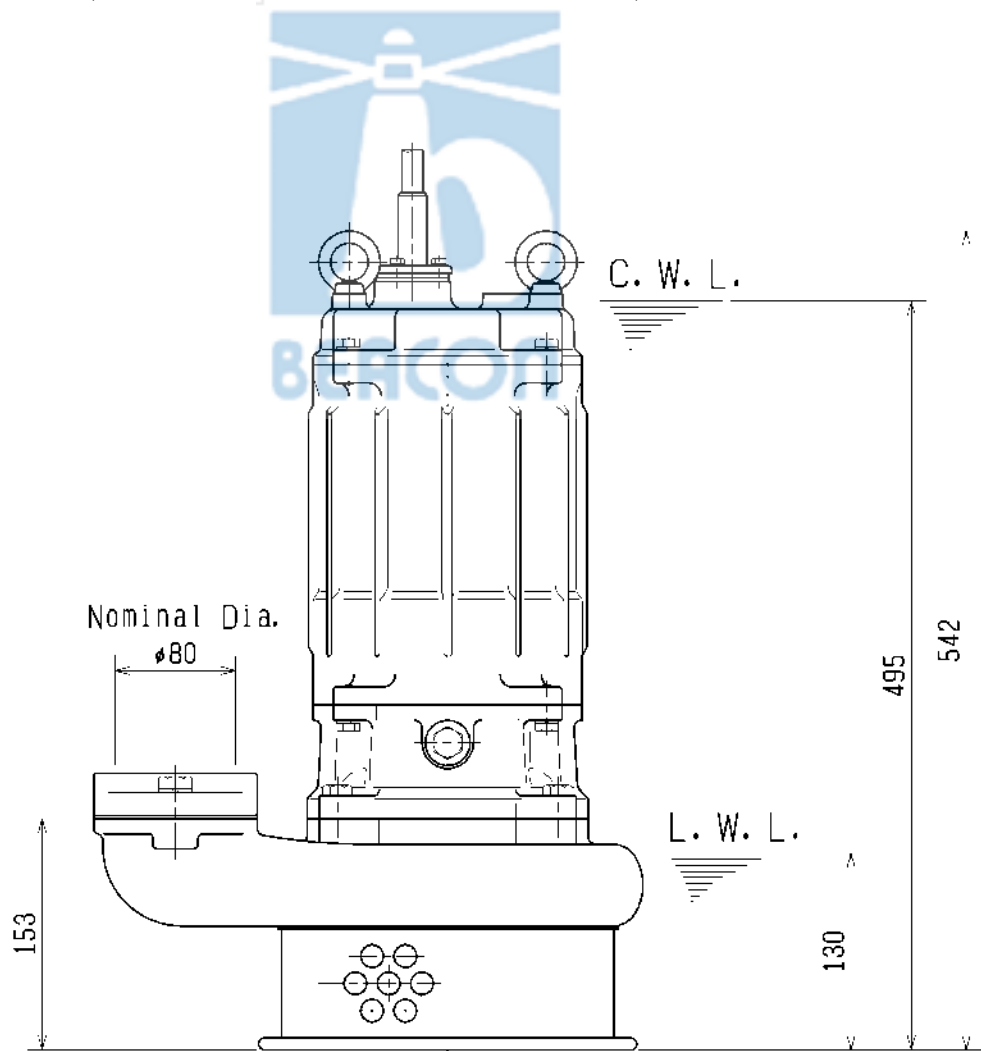
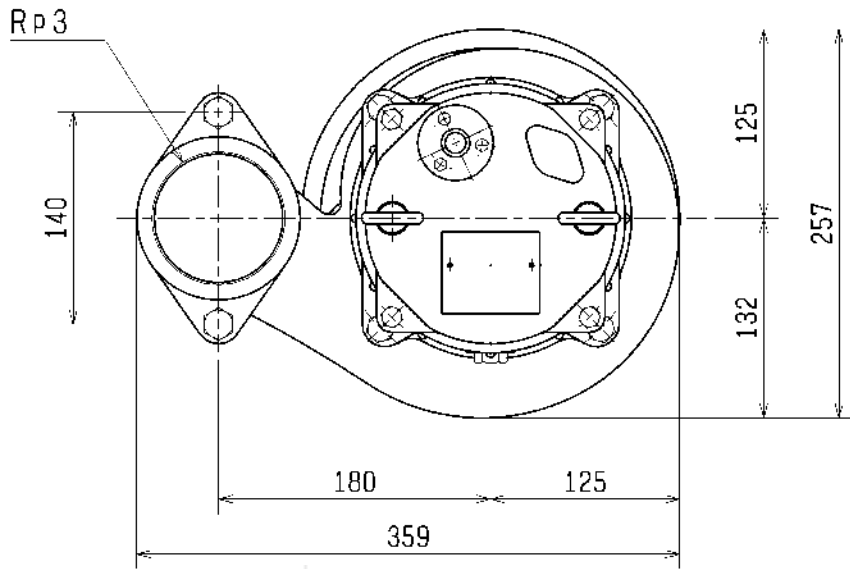
REQ. SPECIFICATION

※ the wetted part

No.	DESCRIPTION	QTY	MATERIAL / NOTE	No.	DESCRIPTION	QTY	MATERIAL / NOTE
1	Cable	1	PVC Sheath	52A	Upper Bearing	1	6204ZCC3
20	Pump Casing	1	Stainless Steel Casting	52B	Lower Bearing	1	6305ZCC3
21	Impeller	1	Stainless Steel Casting	53	Motor Protector	1	
22	Suction Cover	1	Stainless Steel Casting	54	Shaft	1	Stainless Steel 316(※)
23	Strainer	1	Stainless Steel 316	55	Rotor	1	
25	Mechanical Seal	1	X-18W	56	Stator	1	
30	Oil Lifter	1	Steel Sheet	60	Bearing Housing	1	Gray Iron Casting
35	Oil Plug	1	Stainless Steel 316	64	Motor Frame	1	Stainless Steel Casting
36	Lubricant		Turbine Oil (ISO VG32)	71	Soft Sleeve	1	Stainless Steel 316
48	Screwed Flange	1	Stainless Steel Casting	72	Eye Bolt	1	Stainless Steel 316
49	Bottom Plate	1	Stainless Steel 316				
50	Motor Bracket	1	Stainless Steel Casting				

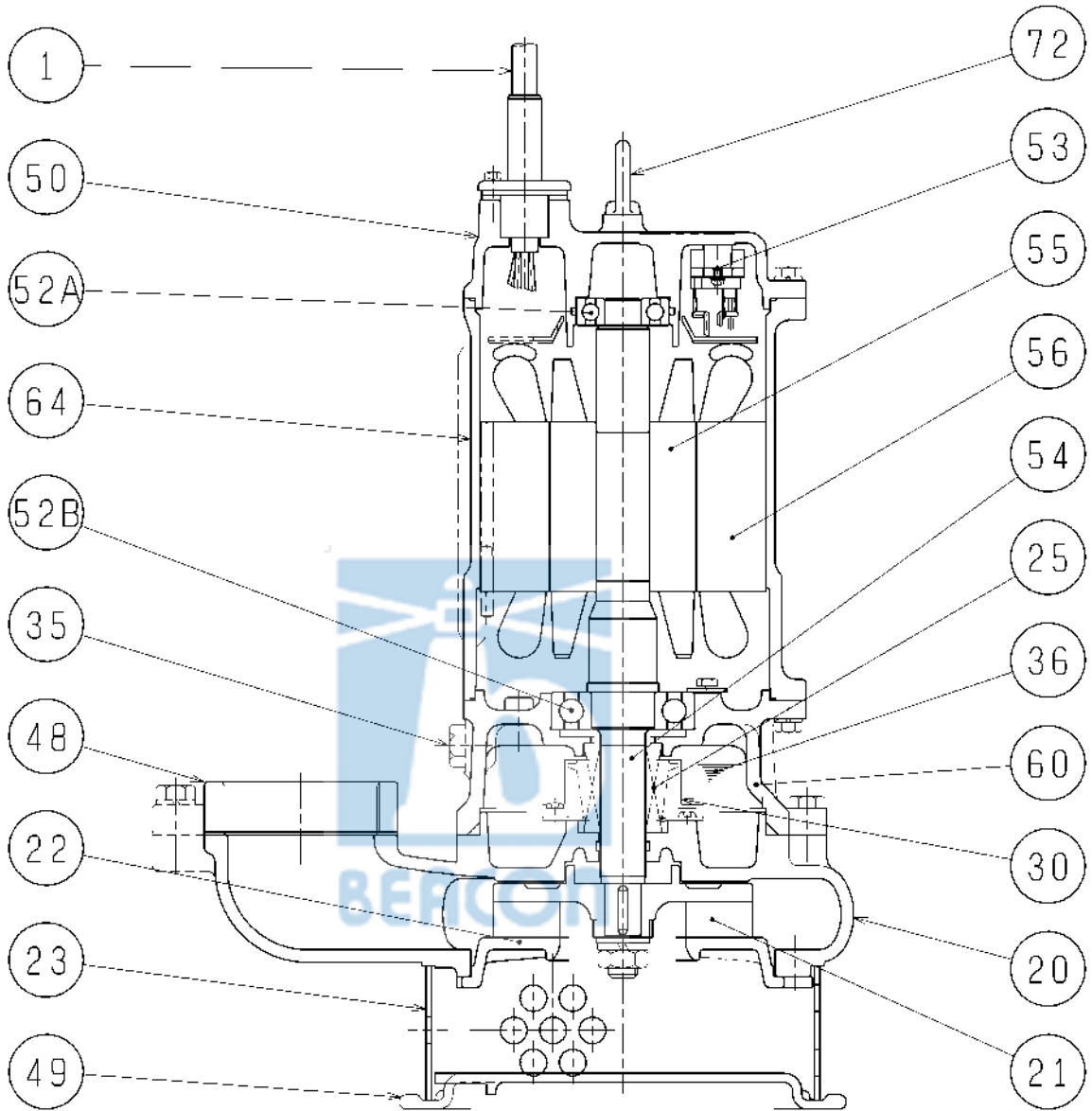
DIMENSION DRAWING		No.	No. A-12167-2
TYPE	Corrosion Resistant Submersible Stainless Steel Pump	MODEL	80SFQ23.7 -53/63

Approximate Weight (※)
52kg
※excluding cable



C. W. L. :Continuous Running Water Level
L. W. L. :Lowest Running Water Level

SECTIONAL DRAWING		No.	No. A-12168-2
TYPE	Corrosion Resistant Submersible Stainless Steel Pump	MODEL	80SFQ23.7 -53/63



REQ. SPECIFICATION

※ the wetted part

No.	DESCRIPTION	QTY	MATERIAL / NOTE	No.	DESCRIPTION	QTY	MATERIAL / NOTE
1	Cable	1	PVC Sheath	52A	Upper Bearing	1	6304ZCC3
20	Pump Casing	1	Stainless Steel Casting	52B	Lower Bearing	1	6307ZCC3
21	Impeller	1	Stainless Steel Casting	53	Motor Protector	1	
22	Suction Cover	1	Stainless Steel Casting	54	Shaft	1	Stainless Steel 316(※)
23	Strainer	1	Stainless Steel 316	55	Rotor	1	
25	Mechanical Seal	1	X-25W	56	Stator	1	
30	Oil Lifter	1	Plastic	60	Bearing Housing	1	Stainless Steel Casting
35	Oil Plug	1	Stainless Steel 316	64	Motor Frame	1	Stainless Steel Casting
36	Lubricant		Turbine Oil (ISO VG32)	72	Eye Bolt	2	Stainless Steel 316
48	Screwed Flange	1	Stainless Steel Casting				
49	Bottom Plate	1	Stainless Steel Casting				
50	Motor Bracket	1	Stainless Steel Casting				

NO. A-11590-1

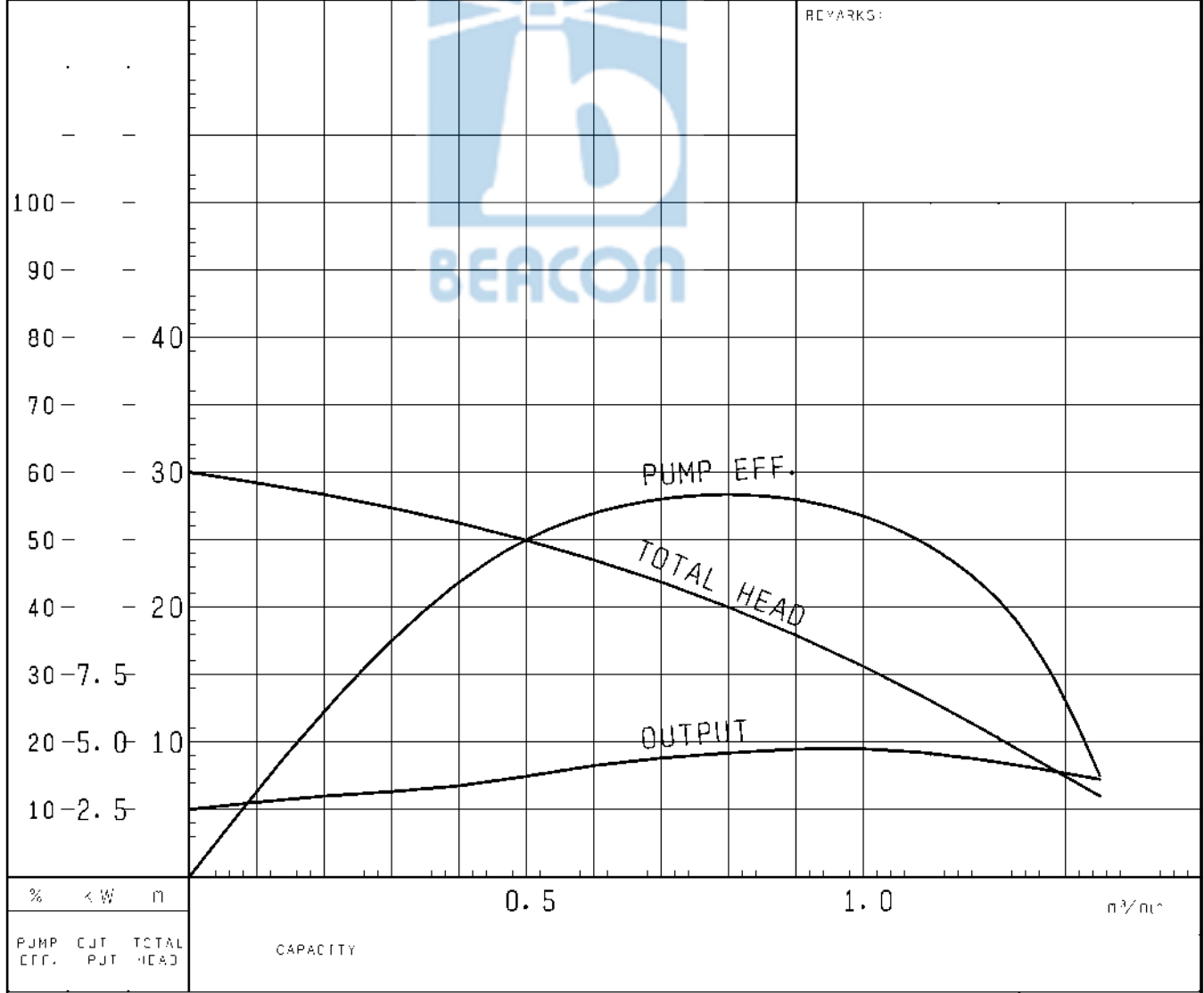
PUMP PERFORMANCE CURVES

TYPE Corrosion Resistant Submersible Stainless Steel Pump	MODEL 80SFQ25.5 -52 TOS80SFQ25.5 -52	FREQUENCY 50 Hz
--	---	-----------------

CUSTOMER'S NAME _____

EQUIPMENT TITLE _____ NO. _____

	STANDARD SPECIFICATIONS	REQUIRED SPECIFICATIONS
DISCHARGE BORE	80 mm	mm
TOTAL HEAD	25 m	m
CAPACITY	0.5 m ³ /min	m ³ /min
MOTOR OUTPUT	5.5 kW	kW
PHASE x VOLTAGE	3 φ x V	φ x V
CURRENT	A	A
POLES / REVOLUTION	2 P / s. s. 3000 min ⁻¹	P / min ⁻¹
STARTING METHOD	DIRECT ON LINE	
INSULATION CLASS	F	

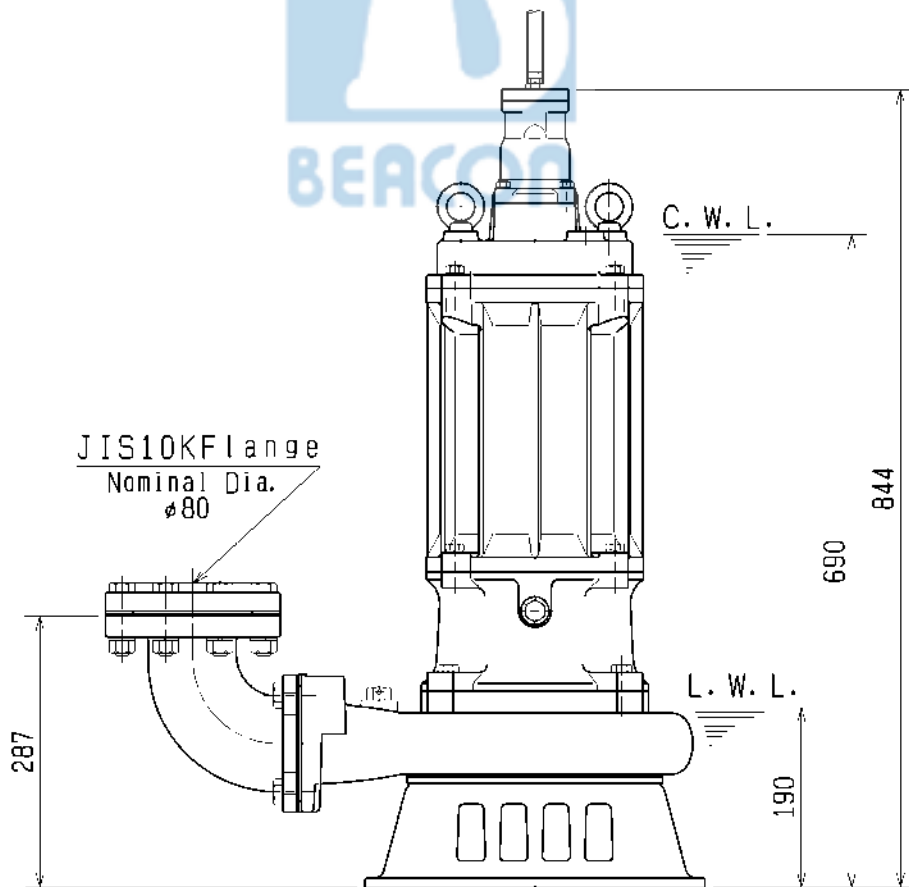
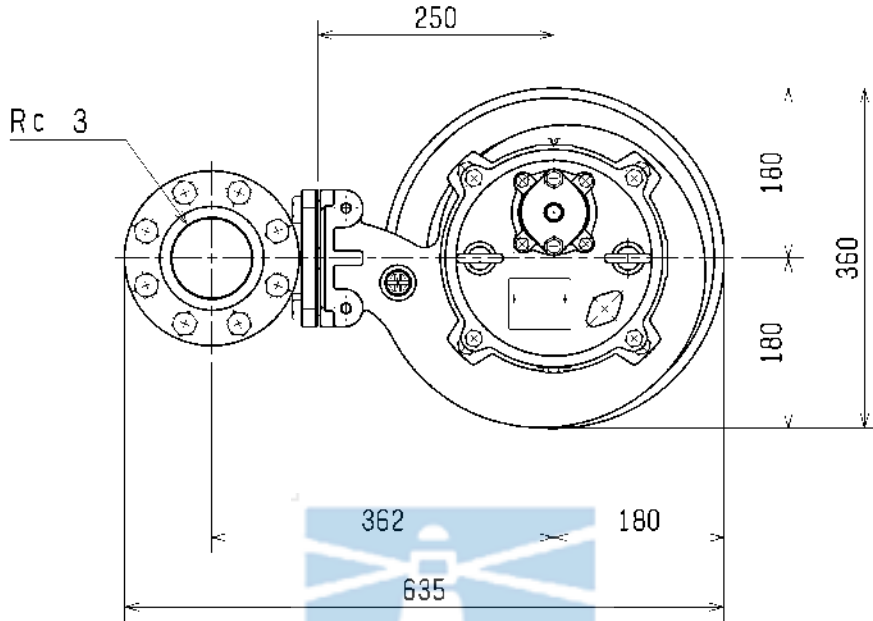


TSURUMI MFG. CO., LTD.

DIMENSION DRAWING		No.	No.	A-11597-2
TYPE	Corrosion Resistant Submersible Stainless Steel Pump	MODEL	80SFQ25.5 -52/62 80SFQ27.5 -52/62	

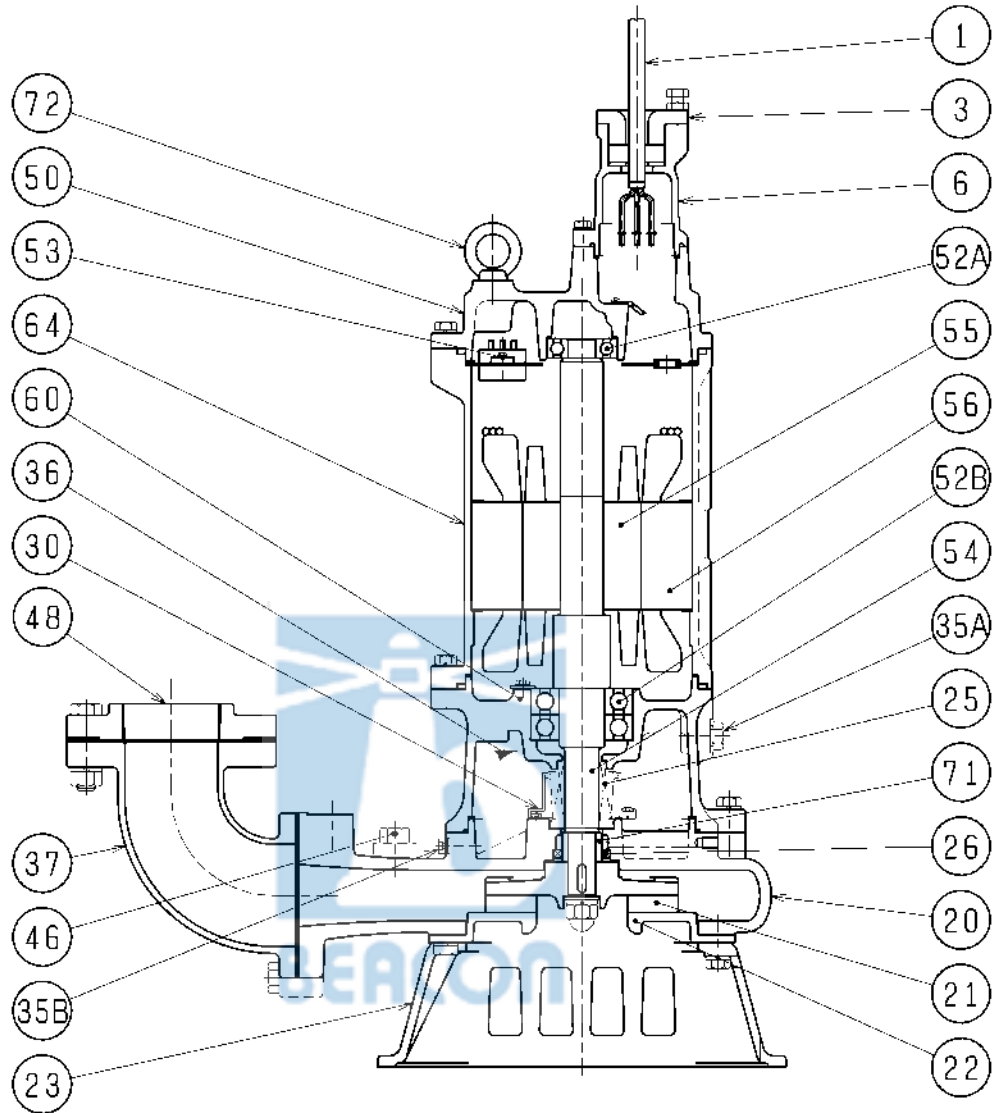
MODEL	Approximate Weight (kg)
80SFQ25.5-52/62	124kg
80SFQ27.5-52/62	123kg

*excluding cable



C.W.L. :Continuous Running Water Level
L.W.L. :Lowest Running Water Level

SECTIONAL DRAWING		No.	No. A-11600-2
TYPE Corrosion Resistant Submersible Stainless Steel Pump		MODEL 80SFQ25.5 -52/62	



REQ. SPECIFICATION

* the wetted part

No.	DESCRIPTION	QTY	MATERIAL / NOTE	No.	DESCRIPTION	QTY	MATERIAL / NOTE
1	Cable	1	Chloroprene Sheath	46	Air Release Valve	1	Stainless Steel 316
3	Gland	1	Stainless Steel Casting	48	Screwed Flange	1	Stainless Steel Casting
6	Stuffing Box	1	Stainless Steel Casting	50	Motor Bracket	1	Stainless Steel Casting
20	Pump Casing	1	Stainless Steel Casting	52A	Upper Bearing	1	6305Z7C3
21	Impeller	1	Stainless Steel Casting	52B	Lower Bearing	1	6308ZZD2C3
22	Suction Cover	1	Stainless Steel Casting	53	Motor Protector	1	
23	Strainer Stand	1	Stainless Steel Casting	54	Shaft	1	Stainless Steel 316(*)
25	Mechanical Seal	1	X-30W	55	Rotor	1	
26	Oil Seal	1	TC35508	56	Stator	1	
30	Oil Lifter	1	Plastic	60	Bearing Housing	1	Stainless Steel Casting
35A	Oil Plug	1	Stainless Steel 316	64	Motor Frame	1	Stainless Steel Casting
35B	Oil Plug	1	Stainless Steel 316	71	Shaft Sleeve	1	Stainless Steel 316
36	Lubricant		Turbine Oil (ISO VG32)	72	Eye Bolt	2	Stainless Steel 316
37	Discharge Bend	1	Stainless Steel Casting				

NO. A-11592-2

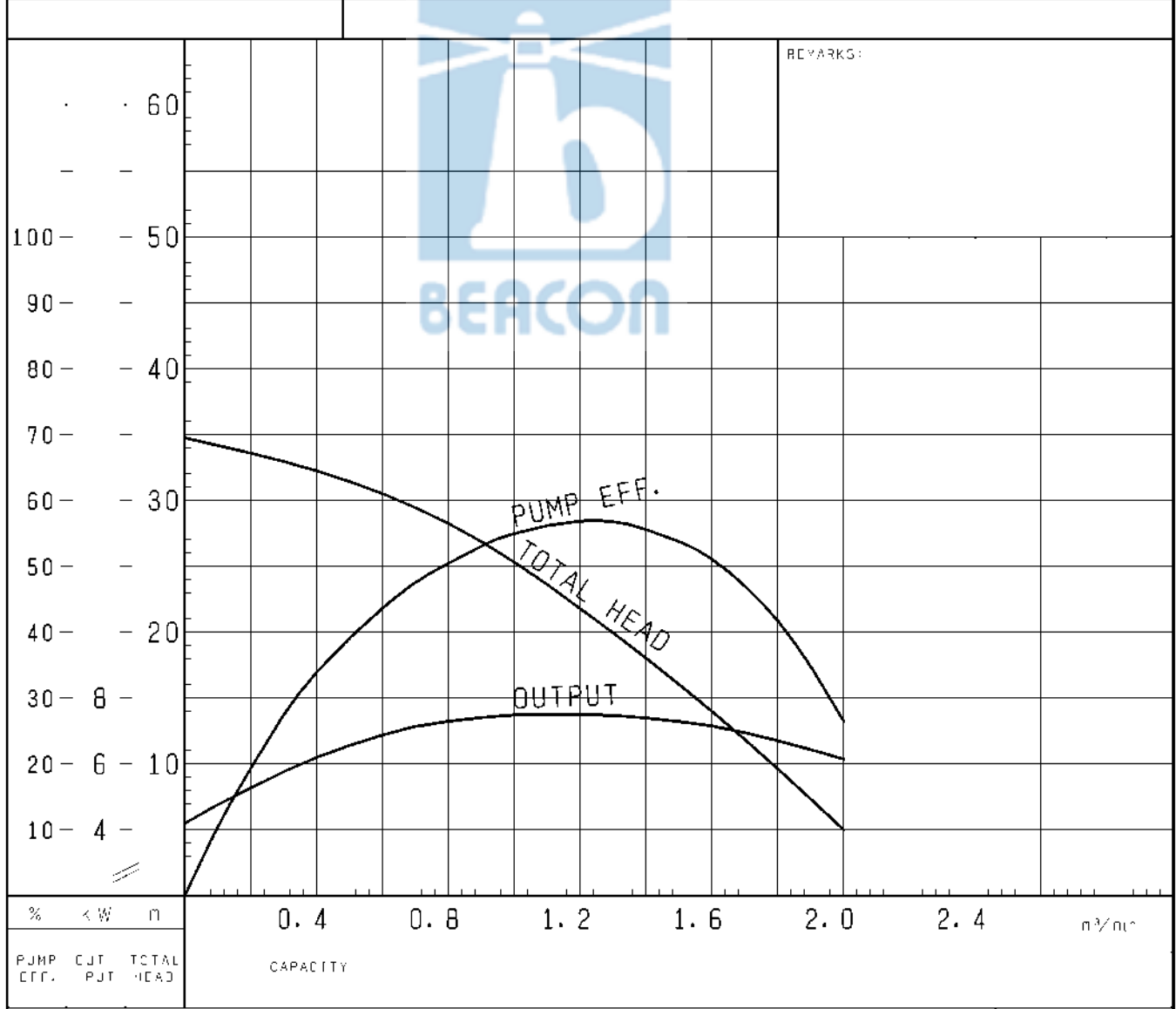
PUMP PERFORMANCE CURVES

TYPE Corrosion Resistant Submersible Stainless Steel Pump	MODEL 80SFQ27.5 -52 TOS80SFQ27.5 -52	FREQUENCY 50 Hz
--	---	-----------------

CUSTOMER'S NAME _____

EQUIPMENT TITLE _____ NO. _____

	STANDARD SPECIFICATIONS	REQUIRED SPECIFICATIONS
DISCHARGE BORE	80 mm	mm
TOTAL HEAD	28 m	m
CAPACITY	0.8 m ³ /min	m ³ /min
MOTOR OUTPUT	7.5 kW	kW
PHASE x VOLTAGE	3 ϕ x	ϕ x V
CURRENT	A	A
POLES / REVOLUTION	2 P / s. s. 3000 min ⁻¹	P / min ⁻¹
STARTING METHOD	DIRECT ON LINE	
INSULATION CLASS	F	

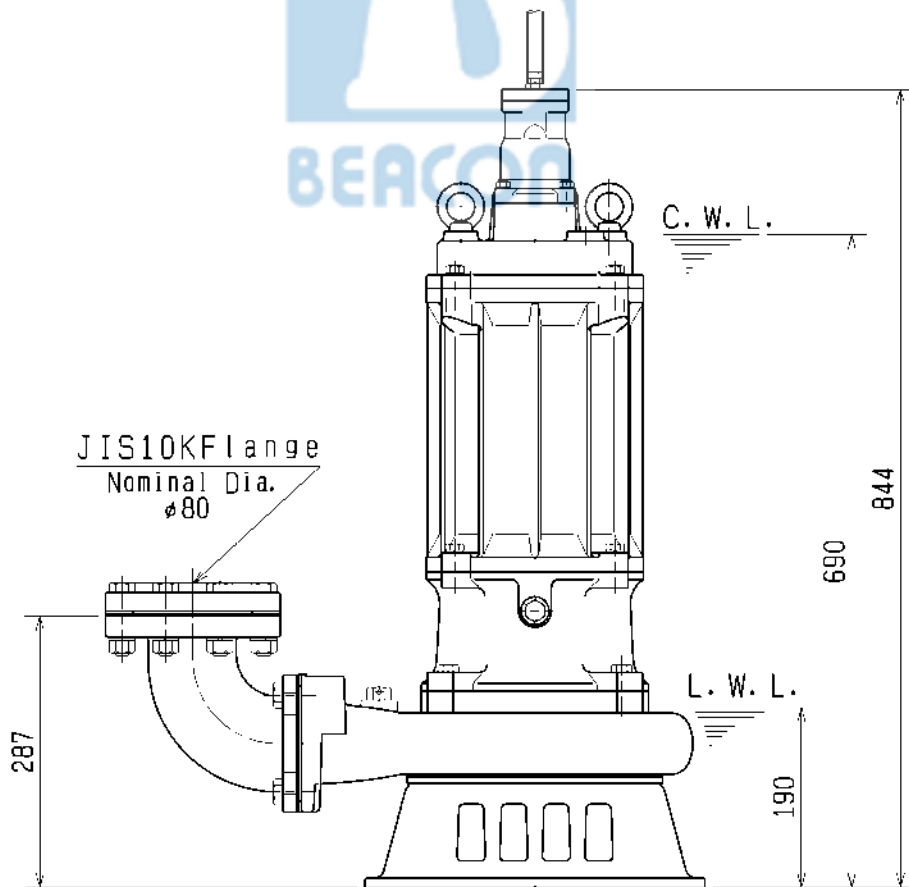
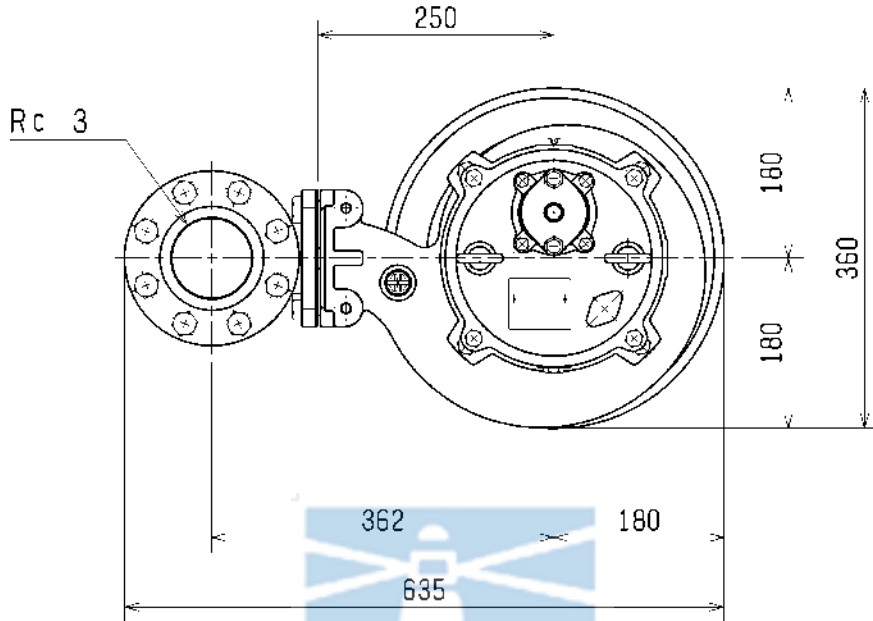


TSURUMI MFG. CO., LTD.

DIMENSION DRAWING		No.	No.	A-11597-2
TYPE	Corrosion Resistant Submersible Stainless Steel Pump	MODEL	80SFQ25.5 -52/62 80SFQ27.5 -52/62	

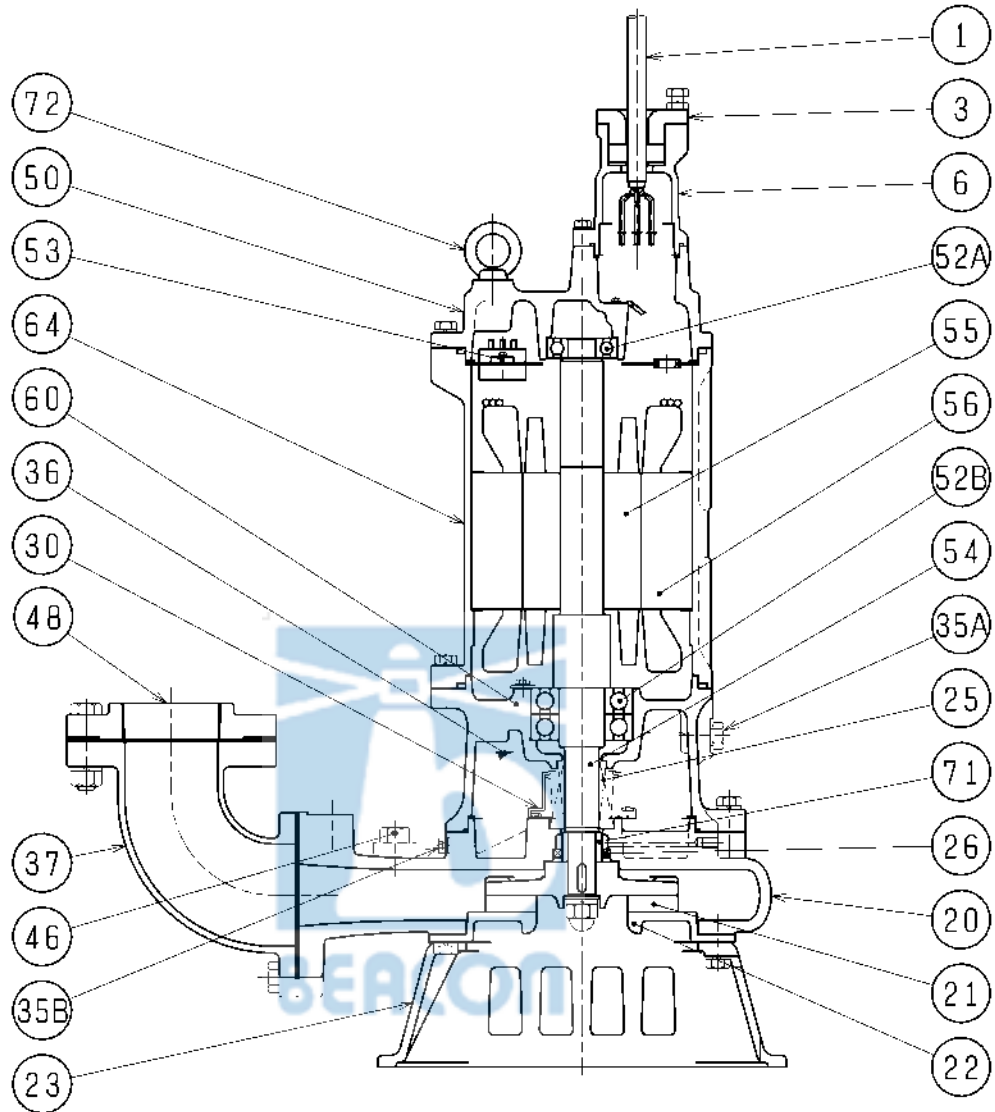
MODEL	Approximate Weight (kg)
80SFQ25.5-52/62	124kg
80SFQ27.5-52/62	123kg

*excluding cable



C.W.L. :Continuous Running Water Level
L.W.L. :Lowest Running Water Level

SECTIONAL DRAWING		No.	No. A-11601-2
TYPE	Corrosion Resistant Submersible Stainless Steel Pump	MODEL	80SFQ27.5 -52/62



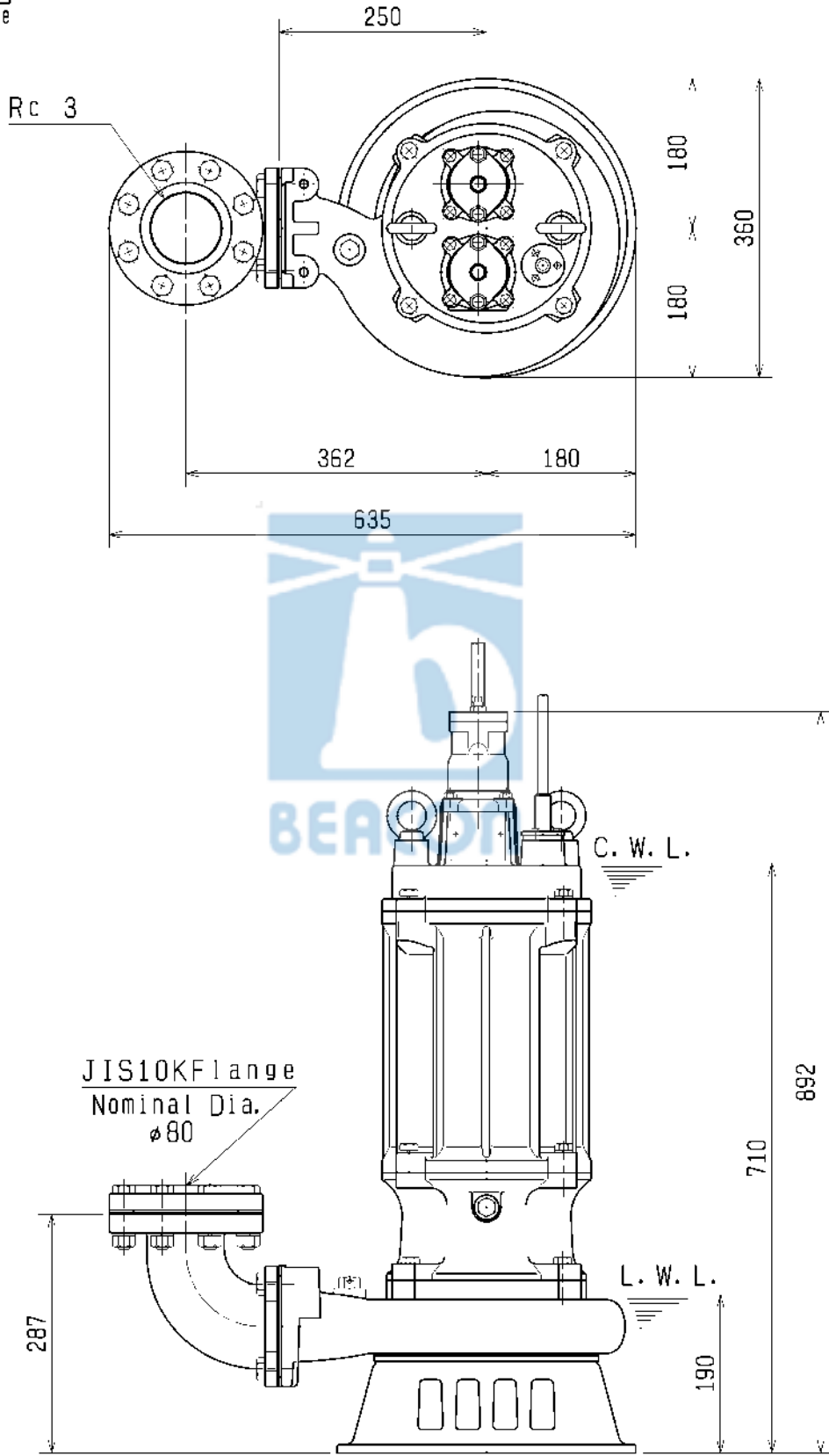
REQ. SPECIFICATION

* the wetted part

No.	DESCRIPTION	QTY	MATERIAL / NOTE	No.	DESCRIPTION	QTY	MATERIAL / NOTE
1	Cable	1	Chloroprene Sheath	46	Air Release Valve	1	Stainless Steel 316
3	Gland	1	Stainless Steel Casting	48	Screwed Flange	1	Stainless Steel Casting
6	Stuffing Box	1	Stainless Steel Casting	50	Motor Bracket	1	Stainless Steel Casting
20	Pump Casing	1	Stainless Steel Casting	52A	Upper Bearing	1	6305Z7C3
21	Impeller	1	Stainless Steel Casting	52B	Lower Bearing	1	6308ZZD2C3
22	Suction Cover	1	Stainless Steel Casting	53	Motor Protector	1	
23	Strainer Stand	1	Stainless Steel Casting	54	Shaft	1	Stainless Steel 316(*)
25	Mechanical Seal	1	X-30W	55	Rotor	1	
26	Oil Seal	1	TC35508	56	Stator	1	
30	Oil Lifter	1	Plastic	60	Bearing Housing	1	Stainless Steel Casting
35A	Oil Plug	1	Stainless Steel 316	64	Motor Frame	1	Stainless Steel Casting
35B	Oil Plug	1	Stainless Steel 316	71	Shaft Sleeve	1	Stainless Steel 316
36	Lubricant		Turbine Oil (ISO VG32)	72	Eye Bolt	2	Stainless Steel 316
37	Discharge Bend	1	Stainless Steel Casting				

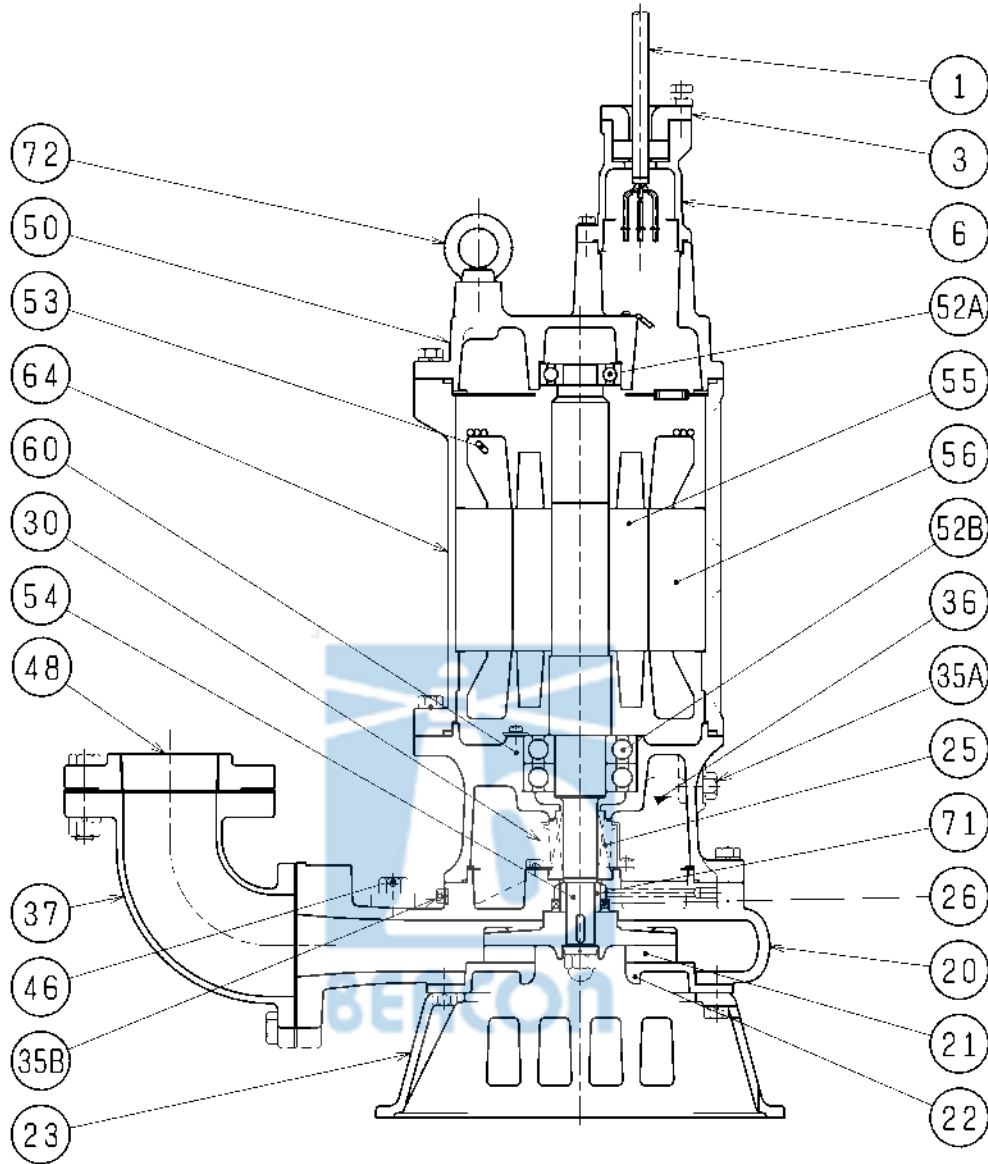
DIMENSION DRAWING		No.	No. A-11598-2
TYPE Corrosion Resistant Submersible Stainless Steel Pump		MODEL	80SFQ211 -52/62

Approximate Weight (※)
143kg
※excluding cable



C.W.L. :Continuous Running Water Level
L.W.L. :Lowest Running Water Level

SECTIONAL DRAWING		No.	No. A-11602-2
TYPE Corrosion Resistant Submersible Stainless Steel Pump		MODEL	80SFQ211 -52/62



REQ. SPECIFICATION	

※ the wetted part

No.	DESCRIPTION	QTY	MATERIAL / NOTE	No.	DESCRIPTION	QTY	MATERIAL / NOTE
1	Cable	3	Chloroprene Sheath	46	Air Release Valve	1	Stainless Steel 316
3	Gland	2	Stainless Steel Casting	48	Screwed Flange	1	Stainless Steel Casting
6	Stuffing Box	2	Stainless Steel Casting	50	Motor Bracket	1	Stainless Steel Casting
20	Pump Casing	1	Stainless Steel Casting	52A	Upper Bearing	1	6306ZZC3
21	Impeller	1	Stainless Steel Casting	52B	Lower Bearing	1	6309ZZD2C3
22	Suction Cover	1	Stainless Steel Casting	53	Motor Protector	3	
23	Strainer Stand	1	Stainless Steel Casting	54	Shaft	1	Stainless Steel 316 (※)
25	Mechanical Seal	1	X-30W	55	Rotor	1	
26	Oil Seal	1	TC35508	56	Stator	1	
30	Oil Lifter	1	Plastic	60	Bearing Housing	1	Stainless Steel Casting
35A	Oil Plug	1	Stainless Steel 316	64	Motor Frame	1	Stainless Steel Casting
35B	Oil Plug	1	Stainless Steel 316	71	Shaft Sleeve	1	Stainless Steel 316
36	Lubricant		Turbine Oil (ISO VG32)	72	Eye Bolt	2	Stainless Steel 316
37	Discharge Bend	1	Stainless Steel Casting				