

NO.

A-20628-2

# PUMP PERFORMANCE CURVES

 TYPE Submersible  
Portable Dewatering Pump

MODEL NK3-15

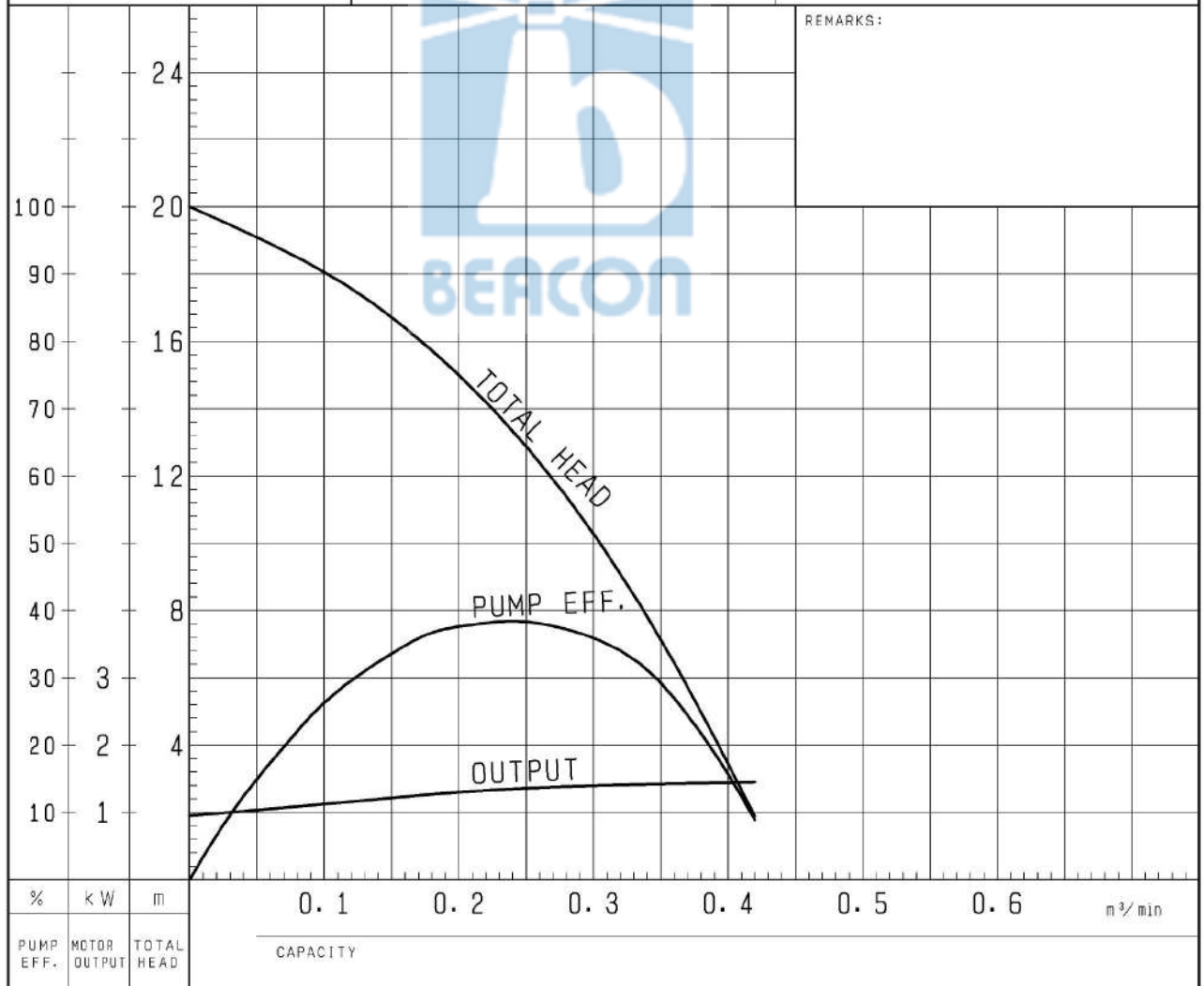
FREQUENCY 50 Hz

CUSTOMER'S NAME

EQUIPMENT TITLE

NO.

	STANDARD SPECIFICATIONS	REQUIRED SPECIFICATIONS
DISCHARGE BORE	50 / 80 mm	mm
TOTAL HEAD	MAX. 20 m	m
CAPACITY	MAX. 0.42 m <sup>3</sup> /min	m <sup>3</sup> /min
MOTOR OUTPUT	1.5 kW	kW
PHASE × VOLTAGE	1 ∅ × V	∅ × V
CURRENT	A	A
POLES / REVOLUTION	2 P / S. S. 3000 min <sup>-1</sup>	P / min <sup>-1</sup>
STARTING METHOD	CAPACITOR START	
INSULATION CLASS	B	

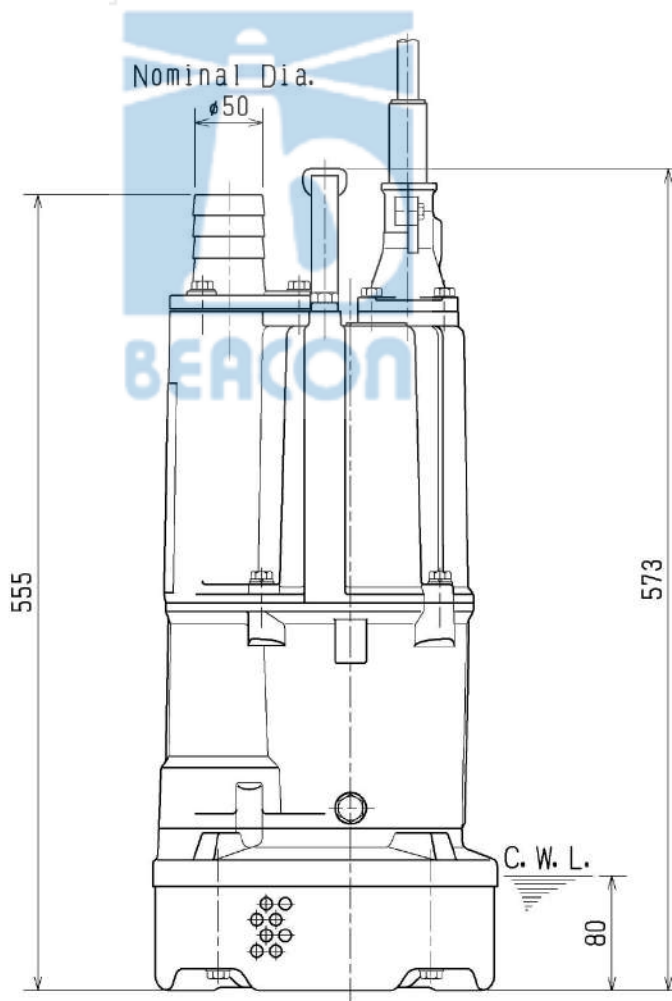
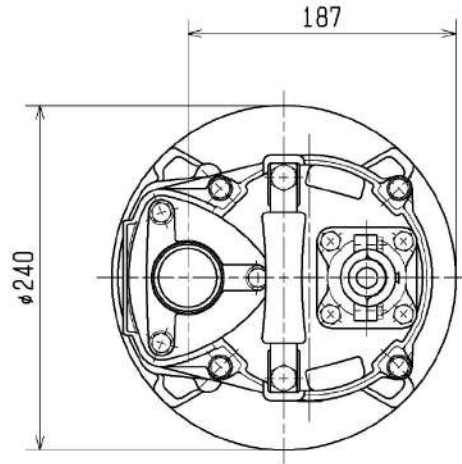


TSURUMI MFG. CO., LTD.

<b>DIMENSION DRAWING</b>		No.	No. A-20632-2
TYPE Submersible Portable Dewatering Pump		MODEL NK3-15	

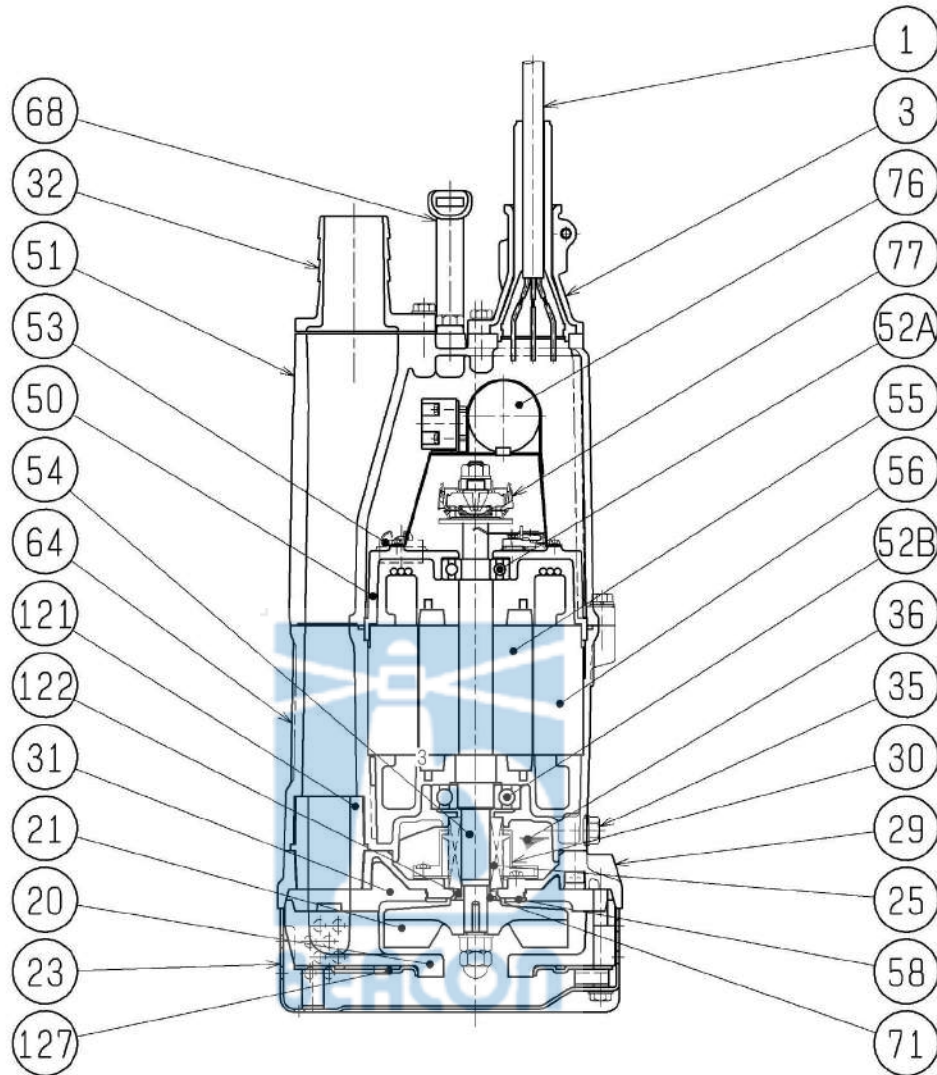
Approximate Weight (※)
29kg

※excluding cable



C. W. L. :Continuous running Water Level

<b>SECTIONAL DRAWING</b>		No.	No. A-20633-3
TYPE Submersible Portable Dewatering Pump		MODEL NK3-15	



REQ. SPECIFICATION	

No.	DESCRIPTION	QTY	MATERIAL / NOTE	No.	DESCRIPTION	QTY	MATERIAL / NOTE
1	Cable	1	Chloroprene Sheath	53	Motor Protector	1	
3	Stuffing Box	1	Aluminium Die Casting	54	Shaft	1	Stainless Steel 403
20	Pump Casing	1	Butadiene Rubber + Natural Rubber	55	Rotor	1	
21	Impeller	1	Ductile Iron Casting	56	Stator	1	
23	Strainer	1	Steel Sheet	58	Protection Plate	1	Stainless Steel 304
25	Mechanical Seal	1	H-20T	64	Motor Frame	1	Aluminium Die Casting
29	Oil Casing	1	Aluminium Die Casting	68	Handle	1	Steel Sheet & Rubber
30	Oil Lifter	1	Plastic	71	Shaft Sleeve	1	Stainless Steel 304
31	Rear Liner	1	Butadiene Rubber	76	Capacitor	1	
32	Hose Coupling	1	Aluminium Die Casting	77	Centrifugal Switch	1	
35	Oil Plug	1	Stainless Steel 304	121	Packing	1	Styrene Butadiene Rubber
36	Lubricant		Turbine Oil (ISO VG32)	122	V-ring	1	Nitrile Butadiene Rubber
50	Motor Bracket	1	Gray Iron Casting	127	Fittings	1	Steel Sheet
51	Head Cover	1	Aluminium Die Casting				
52A	Upper Bearing	1	6204ZZC3				
52B	Lower Bearing	1	6305ZZC3				

NO. A-23378-1

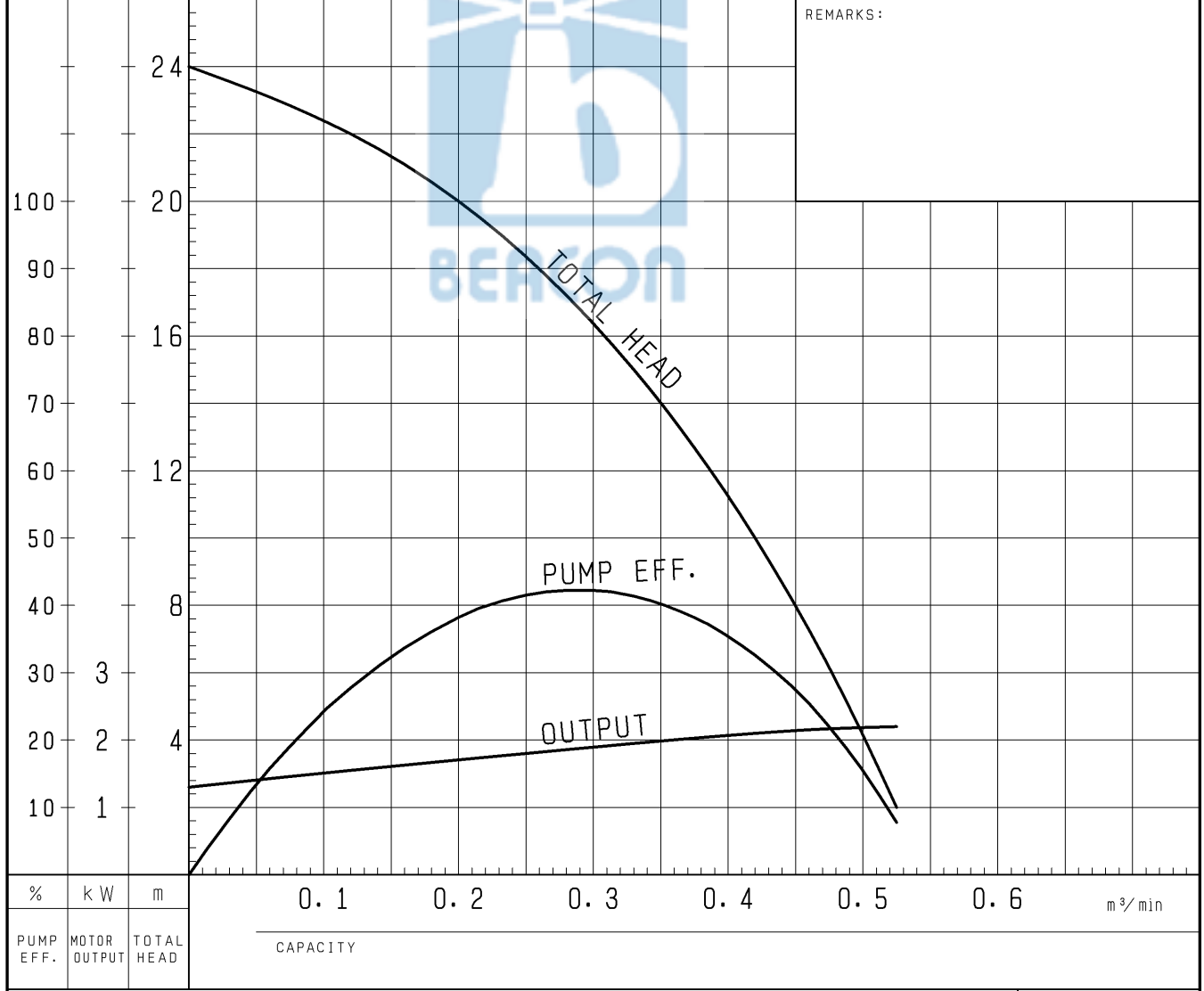
# PUMP PERFORMANCE CURVES

TYPE Submersible Portable Dewatering Pump	MODEL NK4-22	FREQUENCY 50 Hz
---	-----------------	--------------------

CUSTOMER'S NAME \_\_\_\_\_

EQUIPMENT TITLE \_\_\_\_\_ NO. \_\_\_\_\_

	STANDARD SPECIFICATIONS	REQUIRED SPECIFICATIONS
DISCHARGE BORE	50/80 mm	mm
TOTAL HEAD	MAX. 24 m	m
CAPACITY	MAX. 0.525 m <sup>3</sup> /min	m <sup>3</sup> /min
MOTOR OUTPUT	2.2 kW	kW
PHASE × VOLTAGE	1 ∅ × V	∅ × V
CURRENT	A	A
POLES / REVOLUTION	2 P / S. S. 3000 min <sup>-1</sup>	P / min <sup>-1</sup>
STARTING METHOD	CAPACITOR START CAPACITOR MOTOR	
INSULATION CLASS	F	

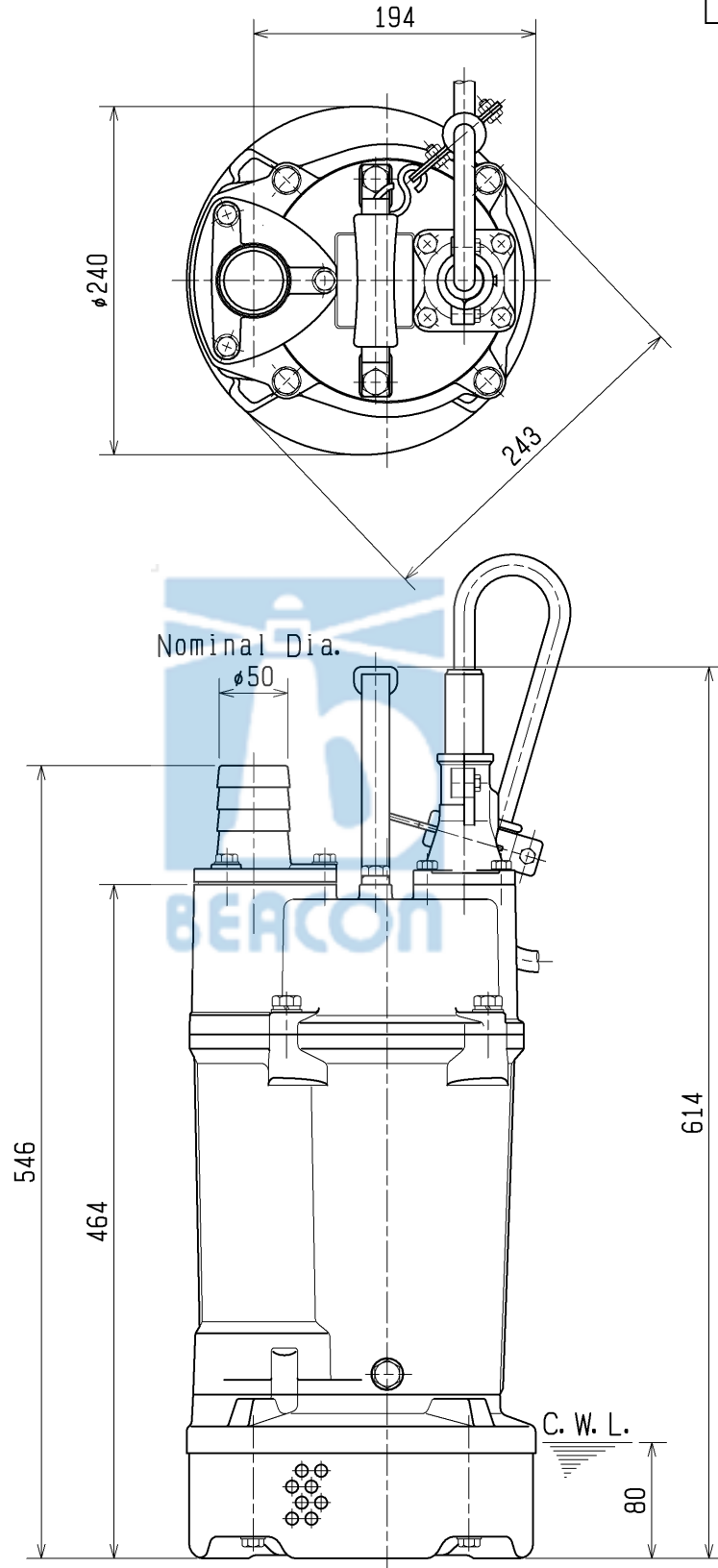


TSURUMI MFG. CO., LTD.

DIMENSION DRAWING		No.	No. A-23380-1
TYPE Submersible Portable Dewatering Pump	MODEL NK4-22		

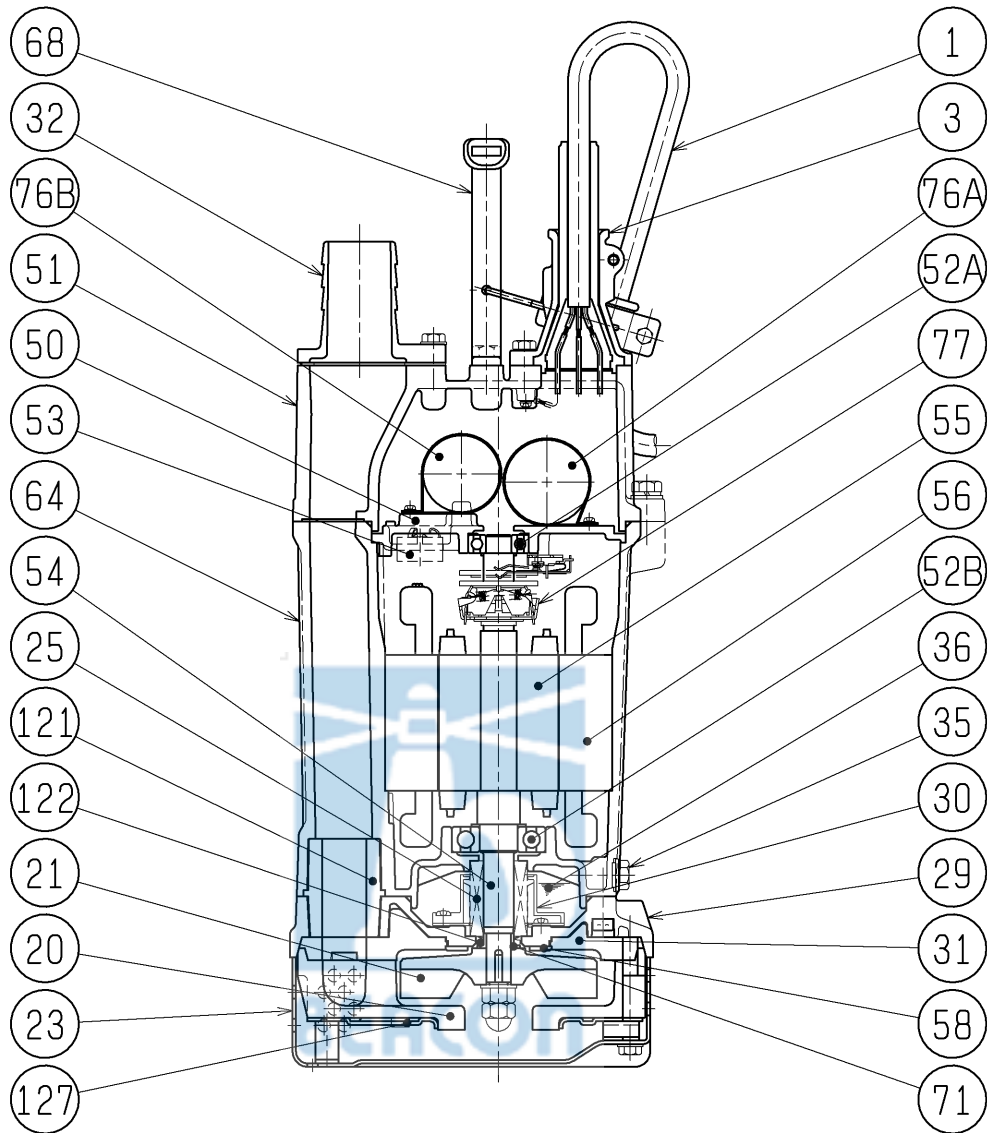
MODEL	Approximate Weight (※)
NK4-22	29kg

※excluding cable



C. W. L. :Continuous running Water Level

<b>SECTIONAL DRAWING</b>		No.	No. A-23382-1
TYPE	Submersible Portable Dewatering Pump	MODEL	NK4-22



REQ. SPECIFICATION	

No.	DESCRIPTION	QTY	MATERIAL / NOTE	No.	DESCRIPTION	QTY	MATERIAL / NOTE
1	Cabtyre Cable	1	Chloroprene Sheath	53	Motor Protector	1	
3	Stuffing Box	1	Aluminium Die Casting	54	Shaft	1	Stainless Steel 403
20	Pump Casing	1	Butadiene Rubber + Natural Rubber	55	Rotor	1	
21	Impeller	1	Ductile Iron Casting	56	Stator	1	
23	Strainer	1	Steel Sheet	58	Protection Plate	1	Stainless Steel 304
25	Mechanical Seal	1	H-20T	64	Motor Frame	1	Aluminium Die Casting
29	Oil Casing	1	Aluminium Die Casting	68	Handle	1	Steel Sheet & Rubber
30	Oil Lifter	1	Plastic	71	Shaft Sleeve	1	Stainless Steel 304
31	Rear Liner	1	Butadiene Rubber	76A	Capacitor	1	
32	Hose Coupling	1	Aluminium Die Casting	76B	Capacitor	1	
35	Oil Plug	1	Stainless Steel 304	77	Centrifugal Switch	1	
36	Lubricant		Turbine Oil (ISO VG32)	121	Packing	1	Styrene Butadiene Rubber
50	Motor Bracket	1	Gray Iron Casting	122	V-ring	1	Nitrile Butadiene Rubber
51	Head Cover	1	Aluminium Die Casting	127	Fittings	1	Steel Sheet
52A	Upper Bearing	1	6203ZZC3				
52B	Lower Bearing	1	6305ZZC3				